



# 807 Dosing Unit 10 mL

6.3032.210

807 Dosing Unit 10 mL ISO/ DIN GL 45 FEP

## Scope of delivery 6.3032.210

Qt.	Order no.	Description
1 PCS	6.1446.030	Ball stopper / B-14/(15)
		For the movable holding of buret tips in titration vessels



1 PCS

**6.1446.040****Threaded stopper / M6**

1 PCS

**6.1543.060****Tip / M6 thread**

Tip with M6 thread. Together with the 6.1805.160 capillary and the 6.1446.030 link stopper, it makes up the entire 6.1537.010 buret tip.



1 PCS

**6.1543.200****Titration tip / M6 thread**

Titration tip with antidiffusion valve.



1 PCS

**6.1619.000****Adsorber tube for 807 Dosing Unit**

1 PCS

**6.1805.100**

**FEP tubing / M6 / 40 cm**

With light and kink protection



1 PCS

**6.1829.010**

**FEP aspiration tube M6, 0.25 m**

With M 6 thread. For Dosing Unit



1 PCS

**6.2008.030**

**Buret tip storage vessel for 807 Dosing Unit**

Together with the 6.2008.050 storage vessel holder, it provides a holder for the buret tip on the 807 Dosing Unit.



1 PCS

**6.2008.050**

**Storage vessel holder for 807 Dosing Unit**

Together with the 6.2008.030 buret tip storage vessel, it provides a holder for the buret tip on the 807 Dosing Unit.



1 PCS

**6.2244.020**

**Cards for intelligent Exchange Unit**

Set of 10 pieces, different colors.



1 PCS

**6.2739.000**

**Wrench**

For tightening connectors



0 PCS

**6.2803.000**

**Grease (1 oz.)**

Special quality (without silicone). For grease-free ground joint connections see 6.2713.XXX



1 PCS





**6.2803.010**

**Grease (2 g)**

Special quality (without silicone). For grease-free ground joint connections see 6.2713.XXX



## Optional accessories

Order no.	Description	
6.1574.210	<b>Cylinder element glass 10 mL</b>  Glass cylinder element complete with cylinder, piston, cylinder base, valve disk, and centering tube. For 807 Dosing Unit 10 mL.	
6.1608.023	<b>Amber glass bottle / 1000 mL / GL 45</b>  For Exchange Units. Bottle for auxiliary solutions.	
6.1608.030	<b>Round glass bottle / 1000 mL / GL 45</b>	
6.1608.040	<b>Bottle PE / 1000 mL / GL 45</b>  For Exchange Units. Bottle for auxiliary solutions.	

6.1608.050

Drying bottle / 100 mL / GL 45



---

6.1608.060

Bottle / 100 mL



---

6.1618.000

Thread adapter 32 mm to GL 45

Adapter for bottles with 32 mm thread (Fluka, Riedel de-Haen 500 mL...) to GL45

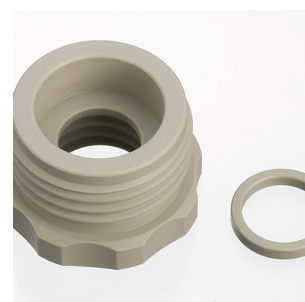


---

6.1618.010

Thread adapter 28 mm to GL 45

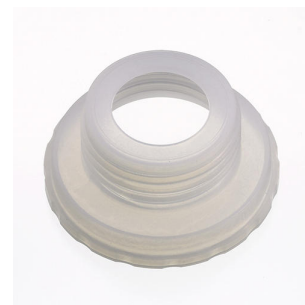
Adapter for bottles with 28 mm thread (Fisher...) to GL45



**6.1618.020**

**Thread adapter S 40 to GL 45**

Adapter for bottles with S40 thread (Merck...) to GL45.



---

**6.1618.050**

**Thread adapter 40 mm to GL 45**

Adapter for bottles with 40 mm thread to GL45.



---

**6.1618.060**

**Thread adapter GL 45 to GL 45**

Thread adapter GL45 to GL45; e.g. for reagent bottles with extended flange



---

**6.1808.280**

**Adapter 807 Dosing Unit Port 4, M6 inner**

Adapter for using Port 4 of the 807 dosing Unit for connection with an FEP tubing / M6.

