



943 Professional Reactor Vario

2.943.0110

943 Professional Reactor Vario 150 °C

Scope of delivery 2.943.0110

Qt.	Order no.	Description
1 PCS	1.943.0010	943 Professional Thermostat / Reactor Vario



1 PCS

6.1015.100

Metrosep BP 1 Guard/2.0

The Metrosep BP 1 Guard/2.0 is used to generate a sufficiently high working pressure in the flow path of post-column reagents. They are used in combination with a high-pressure pump for conveying the post-column reagent in the Professional Reactor.



1 PCS

6.1803.150

PTFE Capillary i.d. 0.25 mm / 1 m



2 PCS

6.1831.100

PEEK capillary 0.25 mm i.d., 1 m



1 PCS

6.2151.020

Cable USB A - USB B 1.8 m

USB connecting cable



1 PCS

6.2621.100

3 mm hex key for IC Sample Processors



1 PCS

6.2621.140

Hexagon key 2.5 mm



1 PCS

6.2744.010

Pressure screw 5x

With UNF 10/32 connection. For the connection of PEEK capillaries



1 PCS

6.2744.014

Pressure screw 2x

With UNF 10/32 connection. For the connection of PEEK capillaries



1 PCS

6.2845.100

Reactor plate complete to Professional Reactor

Intelligent reactor plate with reactor for PCR applications.



Optional accessories

Order no.	Description	
6.1602.200	Bottle cap 2 x M6, 1 x M8 to 6.1608.120 Bottle cap for eluent bottles made of PP for eluents, post-column derivatization solutions, etc. The PP eluent bottle can withstand gas pressure when this bottle cap is used.	
6.1608.120	PP eluent bottle, 2 L Eluent bottle for applications where glass should be avoided.	
6.1836.020	Preheating capillary with core, 1.44 m Preheating capillary to Professional Reactor / Heater	
6.2061.100	Bottle holder for Professional IC instruments Instrument cover and bottle holder for Professional IC instruments.	

**System Connector**

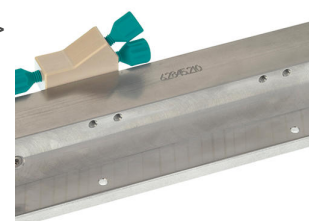
Connects an IC module with the footprint of a Professional IC with a Compact IC

**PEEK coupling M6 / UNF 10/32**

Connecting transfer tubing (M6) with capillaries (UNF 10/32).

**HT reactor plate, complete, for Professional Reactor**

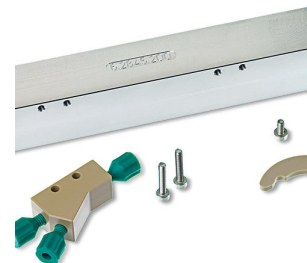
Reactor plate with reactor for PCR applications at high temperatures (> 120 °C). With PEEK reactor capillaries.



6.2845.200

Reactor complete to 6.2845.100

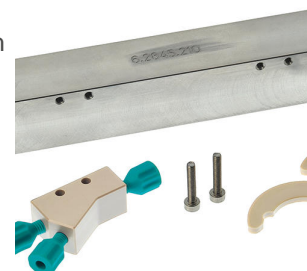
Spare reactor for the reactor plate



6.2845.210

HT reactor, complete, for 6.2845.110

Reactor for PCR applications at high temperatures (> 120 °C). With PEEK reactor capillaries.



6.2845.600

Column holder complete to Professional Thermostat

Intelligent column holder for the Professional Thermostat

