



# 942 Extension Module Vario LQH

2.942.0070

942 Extension Module Vario LQH Professional-IC-Vario «MISP» LQH Professional IC

- 
- 
- 
- 

## Scope of delivery 2.942.0070

Qt.	Order no.	Description
-----	-----------	-------------

The 942 Extension Module Vario LQH is an extension module for the Professional IC Vario line of instruments. It expands the possibilities of **Metrohm Inline Sample Preparation "MISP" and Liquid Handling and opens a Professional IC system for Online Monitoring.**



**Typical applications:**

- Extended Inline Sample Preparation
- Online monitoring
- Dilution without sample changers
- Fully automatic sample derivation reactions

For liquid handling in ion chromatography. To avoid contamination of the Dosino.



Bottle for Extension Module Liquid Handling.



For all IC instruments



1 PCS

**6.1825.230**

**PEEK sample loop 10 µL**

For injection valve, with 2 PEEK pressure screws



---

2 PCS

**6.1826.340**

**Pump tubing LFL (black/black), 3 stoppers**

For the sample solution in inline dialysis.



---

1 PCS

**6.1831.010**

**PEEK capillary 0.25 mm i.d. / 3 m**

For all IC components.

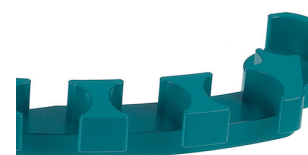


---

1 PCS

**6.2057.200**

**Bottle holder to Extension Module - Liquid Handling**



1 PCS

**6.2156.060**

**Cable Extension Module - Professional IC, 40 cm**

Cable connecting the extension module with a Professional IC instrument



1 PCS

**6.2251.000**

**Colored sleeves for capillaries**

Colored pieces of heat shrink tubing for capillary coding. Three pieces each of five different colors.



1 PCS

**6.2744.010**

**Pressure screw 5x**

With UNF 10/32 connection. For the connection of PEEK capillaries



1 PCS

**6.2744.034**

**Coupling olive/UNF 10/32, 2x**

Connection between pressure screw and pump tubing. 2 pieces. For IC instruments with peristaltic pump.



2 PCS

**6.2744.070**

**Pressure screw short**

Short version. With UNF 10/32 connection. 5 pieces. For the connection of PEEK capillaries



2 PCS

**6.2744.080**

**M6 thread / UNF 10/32 adapter**

With M6 outer thread. For IC instruments.



6 PCS

**6.2744.090**

**Pressure screw long**

Long version. With UNF 10/32 connection. 2 pieces. For the connection of PEEK capillaries (MCS and Sample degasser)

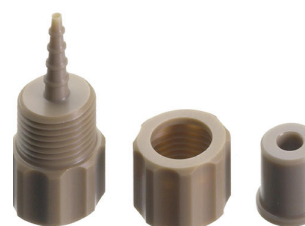


2 PCS

**6.2744.160**

**Nozzle/UNF 10/32 coupling with security device**

Security device for connecting pump tubing to a nozzle.



1 PCS




**6.2744.200**

**Adapter UNF 10/32 outer / M6 inner**

Connecting 1/16 in. PEEK capillaries and transfer tubing (M6)



## Optional accessories

Order no.	Description	
6.2103.170	<b>Adapter to Leak Sensor at Professional IC</b>  Adapter to connect two leak sensors to a Professional IC instrument	
6.2156.070	<b>Cable Extension Module - Professional IC, 1 m</b>  Cable connecting the extension module with the Professional IC instrument	
6.5332.000	<b>IC tubing kit for second extension module</b>	



Client/server-compatible chromatography software from Metrohm for controlling all intelligent Professional IC systems, Compact IC systems and their peripherals, all detectors and the various Autosamplers, 800 Dosino, 771 Compact Interface, etc.

The software permits checks, data acquisition, data evaluation and data monitoring as well as report generation of ion chromatographic analyses.

Data and method are centrally stored on a Server.

Graphical user interface for routine operations, extensive database programs, method development, configuration and manual control panel; very flexible user management, efficient database operations, extensive data export functions, individually configurable report generator, control and monitoring of all system components and the chromatography results.

MagIC Net Multi complies fully with FDA Regulation 21 CFR Part 11 as well as with GLP.

MagIC Net is available in 15 dialog languages: German, English, Chinese, Traditional Chinese, French, Italian, Spanish, Portuguese, Bulgarian, Czech, Hungarian, Japanese, Korean, Russian, Slovakian

With this version, the graphic user interface has been modernized, which improves, among other things, the scaling and sharpness of the user interface on 4K monitors.

Performance for client/server systems with servers outside the in-house company network has been improved.

Client/server version with 3 licenses

---