



858 Professional Sample Processor – Pump

2.858.0020

858 Professional Sample Processor – Pump 500 µL 500 mL 800 Dosino

Scope of delivery 2.858.0020

Qt.	Order no.	Description
1 PCS	1.858.0020	858 Professional Sample Processor – Pump

The 858 Professional Sample Processor – Pump processes samples from 500 µL to 500 mL. The sample transfer takes place either with the installed bidirectional two-channel peristaltic pump or with an 800 Dosino.



3 PCS

6.1608.080

Bottle / 300 mL

Rinsing vessel for IC Sample Processors.



1 PCS

6.1803.030

PTFE capillary 0.5 mm i.d. / 3 m

Capillary for inline dialysis, for Dialysis Unit, IC Dialysis Sample Processor, IC Liquid Handling Dialysis Unit



2 PCS

6.1826.360

Pump tubing LFL (white/white), 3 stoppers

For Sample Processors



1 PCS

6.1831.060

PEEK capillary 0.5 mm i.d., 1 m

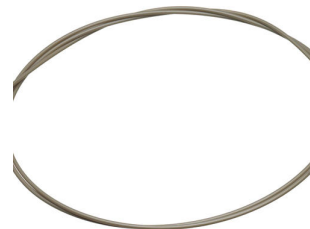
For inline dialysis and for Sample Changers. For IC Dialysis Unit, IC Sample Processor, Compact IC Autosampler, IC Filtration Sample Processor, IC Dialysis Sample Processor, IC Liquid Handling Dialysis Unit



1 PCS

6.1831.160

PEEK capillary, 0.5 mm ID / 70 cm



1 PCS

6.2064.000

Beaker retainer for Advanced IC Sample Processor

Retaining plate for 838 Advanced Sample Processors. For holding 2.5 or 11 mL vials.



1 PCS

6.2151.000

Cable USB A – mini-DIN 8-pin

Controller cable



1 PCS

6.2621.300

Tool set for Advanced IC Sample Processors

Tool set consisting of open-end wrenches and hexagon keys.



1 PCS

6.2739.000

Wrench

For tightening connectors



1 PCS

6.2744.010

Pressure screw 5x

With UNF 10/32 connection. For the connection of PEEK capillaries



1 PCS

6.2744.034

Coupling olive/UNF 10/32, 2x

Connection between pressure screw and pump tubing. 2 pieces. For IC instruments with peristaltic pump.



1 PCS

6.2744.070

Pressure screw short

Short version. With UNF 10/32 connection. 5 pieces. For the connection of PEEK capillaries

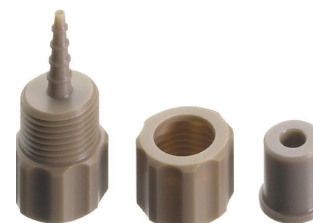


2 PCS

6.2744.160

Nozzle/UNF 10/32 coupling with security device

Security device for connecting pump tubing to a nozzle.

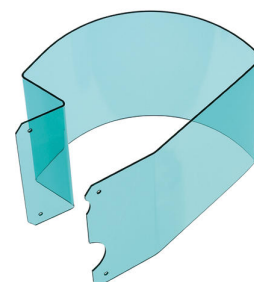


1 PCS

6.2751.110

Safety shield

Safety shield for the Advanced IC/VA Sample Processors.



1 PCS





6.2846.010

Sample needle made of zirconium oxide with PEEK tip

Sample needle for Sample Processors and Autosampler in ion chromatography. The PEEK tip guarantees secure piercing of the vial covering.



Optional accessories

Order no.	Description	
6.1826.310	Pump tubing LFL (orange/green), 3-stopper Pump tubing for suppressor solutions and for acceptor solutions for inline dialysis and for inline ultrafiltration.	
6.1826.320	Pump tubing LFL (orange/yellow) , 3-stopper For suppressor solutions and for acceptor solutions for inline dialysis and for inline ultrafiltration.	
6.1826.330	Pump tubing LFL (orange/white), 3 stoppers For all IC instruments with peristaltic pump.	
6.1826.340	Pump tubing LFL (black/black), 3 stoppers For the sample solution in inline dialysis.	

6.1826.380 Pump tubing LFL (gray/gray), 3 stoppers

For Inline Dilution



6.1826.390 Pump tubing LFL (yellow/yellow), 3 stoppers

For the sample solution in Inline Ultrafiltration.

6.2041.310 Sample rack, 12 x 250 mL, (PVC)

Sample rack for 810 Sample Processor, 814 USB Sample Processor, 855 Robotic Titrosampler "Light", suitable for 12 sample beakers. The following sample beakers can be used: 6.1432.320, 6.1432.323, 6.1453.220, 6.1453.250.

Plastic: Polyvinyl chloride (PVC)



6.2041.320 Sample rack, 16 x 150 mL, (PVC)

Sample rack for 810 Sample Processor, 814 USB Sample Processor, 855 Robotic Titrosampler "Light", suitable for 16 sample beakers. The following sample beakers can be used: 150 mL beaker (tall).

Plastic: Polyvinyl chloride (PVC)



6.2041.340 Sample rack, 24 x 75 mL, (PVC)

Sample rack for 810 Sample Processor, 814 USB Sample Processor, 855 Robotic Titrosampler "Light", suitable for 24 sample beakers. The following sample beakers can be used: 6.1432.210, 6.1459.400.

Plastic: Polyvinyl chloride (PVC)



6.2041.350

Sample rack, 48 x 75 mL (PVC)

Sample rack for 815 Robotic USB Sample Processor XL, 855 Robotic Titrosampler "Basic", suitable for 48 sample beakers. The following sample beakers can be used: 6.1432.210, 6.1459.400.

Plastic: Polyvinyl chloride (PVC)



6.2041.360

Sample rack, 12 x 150 mL (PVC)

Sample rack for 810 Sample Processor, 814 USB Sample Processor, 855 Robotic Titrosampler "Light", suitable for 12 sample beakers. The following sample beakers can be used: 150 mL beaker (tall), 6.1459.310.

Plastic: Polyvinyl chloride (PVC)



6.2041.370

Sample rack, 14 x 200 mL, (PVC)

Sample rack for 810 Sample Processor, 814 USB Sample Processor, 855 Robotic Titrosampler "Light", suitable for 14 sample beakers. The following sample beakers can be used: 6.1459.310.

Plastic: Polyvinyl chloride (PVC)



6.2041.380

Sample rack, 14 x 235 mL (PVC)

Sample rack for 810 Sample Changer, 814 USB Sample Processor, 855 Robotic Titrosampler "Light", suitable for 14 sample beakers. The following sample beakers can be used: 235 mL (8 oz).

Plastic: Polyvinyl chloride (PVC)



6.2041.410

Sample rack, 141 x 11 mL and 1 x 300 mL (PVC)

Sample rack for 815 Robotic USB Sample Processor XL, 855 Robotic Titrosampler "Basic" for 141 sample vessels and 1 rinsing bottle. The following sample vessels can be used: 6.2743.050, 6.2743.057, 6.1608.080.

Plastic: Polyvinyl chloride (PVC)



6.2041.430

Sample rack, 127 x 11 mL and 2 x 300 mL (PVC)

Sample rack for 815 Robotic USB Sample Processor XL, 855 Robotic Titrosampler "Basic" suitable for 127 sample vessels and 2 rinsing bottles. The following sample vessels can be used: 6.2743.050, 6.2743.057, 6.1608.080.

Plastic: Polyvinyl chloride (PVC)



6.2041.440

Sample rack 148 x 11 mL + 3 x 300 mL

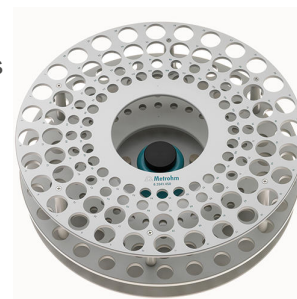
Sample rack for 148 x 11 mL samples with 3 rinsing beakers.



6.2041.450

Sample rack 56 x 11 mL + 56 x 50 mL

Multi-row sample rack for 56 samples in 11 mL sample vessels (6.2743.050) and 56 samples in sample vessels of 50 mL (6.2747.010).



6.2041.760

Sample rack 54 x 11 mL + 1 x 300 mL

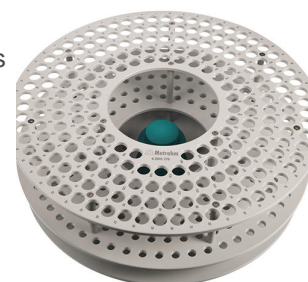
Sample rack with small diameter for 54 x 11 mL sample vessels in two rows and additionally 1 x 300 mL bottle.



6.2041.770

Sample rack 211 x 11 mL

Multi-row sample rack for 211 samples in 11 mL sample vessels (6.2743.050)



6.2041.780

Sample rack 65 x 11 mL + 25 x 50 mL

Multi-row sample rack for 65 samples in 11 mL sample vessels (6.2743.050) and 25 samples in 50 mL sample vessels (6.02743.030)



6.2148.010

Remote Box MSB

Additional remote interface for the connection of devices that can be controlled via remote lines. With permanently attached cable.



6.2624.200

Sample needle made of steel, coated

Alternative to the sample needle made of zirconium oxide. Particularly suitable for septum vessels. Metal-free thanks to special coating. Requires the 1/16 in. needle holder (6.2833.010) for installation on the Sample Processor.



6.2629.000

Screw nut to needle holder IC

On Sample Processors



6.2714.010

Dialysis membrane (cellulose acetate)

Nominal pore size : 0.2 µm. Set of 50 pieces. For inline dialysis



6.2714.020

Filtration membrane reg. cellulose, 0.2 µm, 50 pieces

Nominal pore size: 0.2 µm. Set of 50 pieces. For inline filtration.



For inline dialysis and filtration



2.5 mL. 2000 pieces. For IC Sample Processors.

The IC sample vessels are made of polypropylene (PP) plastic for health-care applications. Production and packaging both take place under sterile and clean-room conditions (Clean Room Class 7, in accordance with DIN ISO 14644). This guarantees minimal degrees of contamination. The sample vessels are subjected to random checks for leachable anions and cations.



2.5 mL. 200 pieces. For IC Sample Processors.

The IC sample vessels are made of polypropylene (PP) plastic for health-care applications. Production and packaging both take place under sterile and clean room conditions (Clean Room Class 7, in accordance with DIN ISO 14644). This guarantees minimal degrees of contamination. The sample vessels are subjected to random checks for leachable anions and cations.



2000 pieces. For IC Sample Processors and VA Autosamplers.

The IC sample vessels are made of polypropylene (PP) plastic for health-care applications. Production and packaging both take place under sterile and clean room conditions (Clean Room Class 7, in accordance with DIN ISO 14644). This guarantees minimal degrees of contamination. The sample vessels are subjected to random checks for leachable anions and cations.



6.2743.057

Sample vessel 11 mL

200 pieces. For IC Sample Processors and VA Autosamplers.

The IC sample vessels are made of polypropylene (PP) plastic for health-care applications. Production and packaging both take place under sterile and clean room conditions (Clean Room Class 7, in accordance with DIN ISO 14644). This guarantees minimal degrees of contamination. The sample vessels are subjected to random checks for leachable anions and cations.



6.2743.070

Stopper with perforation

2000 pieces. For IC Sample Processors



6.2743.077

Stopper with perforation

200 pieces. For IC Sample Processors



6.5330.100

IC equipment: Inline Dialysis

Accessory set for Inline Dialysis. For use with the 858 Professional Sample Processor and an additional 2-channel peristaltic pump.



Accessory set for Inline Dilution. For use with the 858 Professional Sample Processor, 800 Dosino and 741 Magnetic Stirrer.



Accessory set for assembling the Liquid Handling Station on the Professional Sample Processor. The rinsing water supply can be accomplished by means of a peristaltic pump or a Dosino.



Accessory set for Inline Preconcentration (MiPCT) including Liquid Handling Station, left.



Accessory set for assembling a Dosino for Metrohm intelligent Preconcentration Technique with Matrix Elimination (MiPCT-ME).



IC equipment: MiPuT

IC equipment: MiPT

A collection of various electronic components including resistors, capacitors, integrated circuits, and wires.

Sample rack 25 x 60 mL + 10 x 125 mL