



IC equipment: Additional eluent on the Eluent Production Module

6.5330.090

Accessory set for Eluent Production Module. Contains all parts necessary for expansion by one eluent. The level sensor must be ordered in accordance with the application.

Phạm vi giao hàng 6.5330.090

Qt.	Order no.	Description
1 PCS	6.1580.250	807 Dosing Unit 50 mL without accessories
		807 Dosing Unit with integrated data chip with 50 mL glass cylinder and light protection, mountable to a reagent bottle with ISO/DIN GL 45 glass thread.



1 PCS

6.1602.160

Bottle attachment GL 45 for eluents and reagents

For eluent, reagent, and rinsing bottles, with connectors for the adsorber tube and the aspiration tubing.



1 PCS

6.1608.070

Eluent bottle / 2 L / GL 45

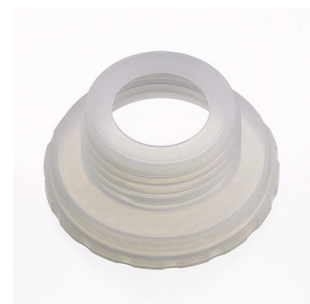


1 PCS

6.1618.020

Thread adapter S 40 to GL 45

Adapter for bottles with S40 thread (Merck...) to GL45.



1 PCS

6.1618.050

Thread adapter 40 mm to GL 45

Adapter for bottles with 40 mm thread to GL45.



1 PCS

6.1619.000

Adsorber tube for 807 Dosing Unit



1 PCS

6.1621.000

Container 10 L

As rinsing or waste container in automated systems.



1 PCS

6.1621.100

Cap for 10-L container

Cap for 10-L container. For easy and safe transportation of filled containers.



1 PCS

6.1624.000

Adapter SGJ 14 for 6.1619.XXX Adsorber tube

Adapter SGJ 14. Part of 6.1619.010 for Dilution Sample Processor.



1 PCS

6.1626.000

Bottle attachment GL 45 for level sensor

This bottle attachment, fitted with the 6.2769.XXX sensors, results in the level sensors EMPTY and FULL, respectively, for bottles and canisters.



4 PCS

6.1805.530

FEP tubing / M6 / 2 m

With light and kink protection



1 PCS

6.1808.280

Adapter 807 Dosing Unit Port 4, M6 inner

Adapter for using Port 4 of the 807 dosing Unit for connection with an FEP tubing / M6.



1 PCS

6.1815.010

Spiral band 0.5 m

For holding together different cables or tubing.



1 PCS

6.1819.100

FEP aspiration tubing to 2 L bottle

Aspiration tubing to bottle attachment with M6 connector. For the production of eluents.



1 PCS

6.1819.110

FEP aspiration tubing to canister

Aspiration tubing to canister attachment with M6 connector. For the production of eluents.

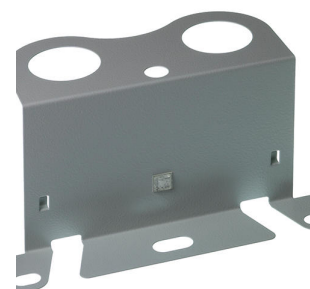


1 PCS

6.2057.210

Holder for Dosino to IC instruments

Mounting part for Dosinos at the IC instrument housing.



1 PCS

6.2151.060

Cable for Level Control and Eluent Production Module

Connecting cable for sensor and Level Control or Eluent Production Module.



1 PCS




6.2744.200

Adapter UNF 10/32 outer / M6 inner

Connecting 1/16 in. PEEK capillaries and transfer tubing (M6)



Phụ kiện tùy chọn

Order no.	Description	
6.2769.000	FULL sensor for level sensor	
6.2769.100	EMPTY sensor for level sensor for 1 L bottles	
6.2769.110	EMPTY sensor for level sensor for 2 L bottles	
6.2769.120	EMPTY sensor for level sensor for 10 L canisters	