



814 USB Sample Processor (1T/0P)

2.814.0030

USB Sample Processor with one workstation for the automatic processing of routine samples in series with small to medium quantities. Up to two pumps (membrane or peristaltic) and three dosing devices for Liquid Handling tasks can be connected.

Because of the multitude of application variants, rack, stirrer, titration head, Swing Head and sample vessels must be tailored to the application and ordered separately.

The control is "stand alone" using Touch Control. The following software products can be selected for the PC control: tiamo™ titration software, MagIC Net chromatography software, viva voltammetry software, or OMNIS.

Phạm vi giao hàng 2.814.0030

Qt.	Order no.	Description
-----	-----------	-------------

1 PCS

1.814.0030

814 USB Sample Processor (1T/0P)

USB Sample Processor with one workstation for the automatic processing of routine samples in series with small to medium quantities. Up to two pumps (membrane or peristaltic) and three dosing devices for Liquid Handling tasks can be connected.

Because of the multitude of application variants, rack, stirrer, titration head, Swing Head and sample vessels must be tailored to the application and ordered separately.



2 PCS

6.1236.020

Sleeve with SGJ 14/12 mm

Sleeve with SGJ 14/12 mm and O-ring.



1 PCS

6.1805.110

FEP tubing / M6 / 80 cm

With light and kink protection



1 PCS

6.2151.000

Cable USB A – mini-DIN 8-pin

Controller cable



1 PCS

6.2621.030

Hexagon key 4 mm



1 PCS

6.2621.070

5 mm hex key for IC Sample Processors



1 PCS

6.2621.140

Hexagon key 2.5 mm



3 PCS

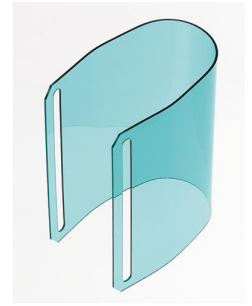
6.2709.070

Guiding sleeve

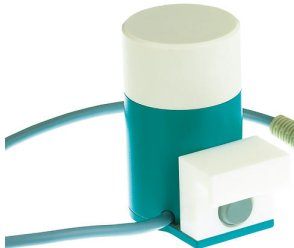



For fixation of buret and dosing tips in titration heads and electrode holders



Safety shield for single-tower Sample Processors without 786 Swing Head.



Phụ kiện tùy chọn

Order no.	Description	
2.741.0010	741 Magnetic Stirrer Magnetic stirrer for sample changers. The magnetic stirrer is located beneath the sample rack.	
2.772.0120	772 Pump Unit – aspirate Peristaltic pump for direct connection to Sample Processors. The "Aspiration" version contains extensive accessories for the aspiration of titrated-out solutions.	
2.772.0130	772 Pump Unit – rinse Peristaltic pump for direct connection to Sample Processors. The "Rinse" version contains extensive accessories for rinsing.	
2.802.0020	802 Stirrer for sample changer Rod stirrer for sample changer and Sample Processor. With 104 mm 6.1909.020 stirring propeller and permanently installed cable.	

2.823.0020

823 Membrane Pump Unit «aspire»

Membrane pump for direct connection to Sample Processors. The «Aspiration» version contains numerous accessories for aspirating off solutions.



2.823.0030

823 Membrane Pump Unit «rinse»

Membrane pump for direct connection to Sample Processors. The «Rinsing» version contains numerous rinsing accessories.



2.843.0050

843 Pump Station (membrane) - rinse/aspirate for Sample Processors

The 843 Pump Station (membrane) has two built-in membrane pumps. These can be controlled directly from the Sample Processor via pump commands. The Rinse / Aspirate version is provided with all the accessories needed for automatically emptying the titration beaker and rinsing the titration equipment. The accessories are intended for use with the 814 and 815 Sample Processors.



2.843.0150

843 Pump Station (peristaltic) - rinse/aspirate for Sample Processors

The 843 Pump Station (peristaltic) has two built-in peristaltic pumps. These can be controlled directly from the Sample Processors via pump commands. The rinse/aspirate version is provided with all the accessories needed for automatically emptying the titration beaker and rinsing the titration equipment. The accessories are intended for use with the 814 and 815 Sample Processors.



2.849.0010

849 Level Control

Additional equipment for Sample Processors for monitoring the filling level of rinsing or waste canisters via Remote. Prevents pumps from running dry and/or canisters from overflowing and is suitable for use with aqueous solutions, solvents and suspensions.



6.06000.000

OMNIS Software storage device

License-based PC program for controlling complex OMNIS analysis systems.

- Sample-oriented operating procedures with numerous templates
- Graphical method editor with numerous templates
- Clearly organized and professional sample lists
- Management of instruments, work systems, sensors, solutions
- Dialog languages: German, English, Chinese



6.06003.010

OMNIS Stand-Alone license

Enables stand-alone operation of the OMNIS software on a Windows™ computer.

Features:

- The license already includes one OMNIS instrument license.
- Must be activated via the Metrohm licensing portal.
- Not transferable to another computer.



6.1458.010 Titration head, 6 x SGJ 14 and 3 x SGJ 9 openings.

With 6xSGJ 14 and 3x SGJ 9 openings.



6.1458.020 Titration head /4 x M10 connectors

With 4 M10 screw nipples, including stoppers.



6.1458.030 KF titration head /4 x M10 connectors

With 4 M10 screw nipples, including stoppers.



6.1458.040 Titration Head, 3 x SGJ 14

Titration head for 120 mL beakers. With 3 openings SGJ 14 and 4 openings 6.4 mm, 2 dosing tips included. Suitable for rinsing and aspiration equipment.



Titration head for 75 mL beakers. With 2 openings SGJ 14, 2 openings 6.4 mm, and 3 pre-mounted dosing tips. Suitable for rinsing and aspiration equipment.



Sample rack for 810 Sample Processor, 814 USB Sample Processor, 855 Robotic Titrosampler "Light", suitable for 12 sample beakers. The following sample beakers can be used: 6.1432.320, 6.1432.323, 6.1453.220, 6.1453.250.

Plastic: Polyvinyl chloride (PVC)



Sample rack for 810 Sample Processor, 814 USB Sample Processor, 855 Robotic Titrosampler "Light", suitable for 16 sample beakers. The following sample beakers can be used: 150 mL beaker (tall).

Plastic: Polyvinyl chloride (PVC)



Sample rack for 810 Sample Processor, 814 USB Sample Processor, 855 Robotic Titrosampler "Light", suitable for 24 sample beakers. The following sample beakers can be used: 6.1432.210, 6.1459.400.

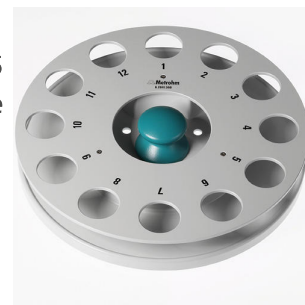
Plastic: Polyvinyl chloride (PVC)



6.2041.360 Sample rack, 12 x 150 mL (PVC)

Sample rack for 810 Sample Processor, 814 USB Sample Processor, 855 Robotic Titrosampler "Light", suitable for 12 sample beakers. The following sample beakers can be used: 150 mL beaker (tall), 6.1459.310.

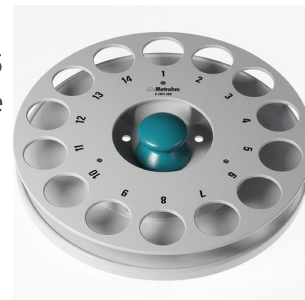
Plastic: Polyvinyl chloride (PVC)



6.2041.380 Sample rack, 14 x 235 mL (PVC)

Sample rack for 810 Sample Changer, 814 USB Sample Processor, 855 Robotic Titrosampler "Light", suitable for 14 sample beakers. The following sample beakers can be used: 235 mL (8 oz).

Plastic: Polyvinyl chloride (PVC)



6.2041.390 Sample rack, 16 x 100 mL, (PVC)

Sample rack for 810 Sample Changer, 814 USB Sample Processor, 855 Robotic Titrosampler "Light", suitable for 16 sample beakers. The following sample beakers can be used: 100 mL beakers, short.

Plastic: Polyvinyl chloride (PVC)



6.2041.460 Sample rack, 21 x 100 mL, (PVC)

Sample rack for 810 Sample Processor, 814 USB Sample Processor, 855 Robotic Titrosampler "Light" suitable for 21 sample vessels. The following sample vessels can be used: 100 mL digestion tubes (CSB).

Plastic: Polyvinyl chloride (PVC)



6.2041.470 Sample rack, 22 x 120 mL, (PP)

Sample rack for 810 Sample Changer, 814 USB Sample Processor, 855 Robotic Titrosampler "Light", suitable for 22 sample beakers. The following sample beakers can be used: 6.1459.300, 6.1459.307.

Plastic: Polypropylene (PP)



6.2041.770 Sample rack 211 x 11 mL

Multi-row sample rack for 211 samples in 11 mL sample vessels (6.2743.050)



6.2041.780 Sample rack 65 x 11 mL + 25 x 50 mL

Multi-row sample rack for 65 samples in 11 mL sample vessels (6.2743.050) and 25 samples in 50 mL sample vessels (6.02743.030)



6.2058.110 Tower extension for Sample Processors

Height extension 130 mm for Sample Processors. Tower extension for COD applications.



6.2141.300

Remote cable 843 Pump Station to Sample Processor

Remote cable for the direct connection of the 843 Pump Station to the pump connectors of the Sample Processors



6.2148.010

Remote Box MSB

Additional remote interface for the connection of devices that can be controlled via remote lines. With permanently attached cable.



6.2711.060

Drip pan for 778/810/814/838/858 Sample Processors

Drip pan for 778, 810, 814, 838, 858 Sample Processors

