



## IC: Low Volume

6.5330.200

858 Professional Sample Processor2

**6.5330.200**

Qt.	Order no.	
1 PCS	<b>6.1602.150</b>	<b>Bottle attachment / GL 45 - 3 x UNF 10/32</b>

For the connection of 1/16 in. capillaries. Used in conjunction with MSM auxiliary solutions and in Metrohm Inline Sample Preparation.



1 PCS

6.1608.070

Eluent bottle / 2 L / GL 45



---

8 PCS

6.1803.040

PTFE capillary 0.5 mm i.d. / 1 m

Capillary for sample handling in IC.



---

2 PCS

6.1826.320

Pump tubing LFL (orange/yellow) , 3-stopper

For suppressor solutions and for acceptor solutions for inline dialysis and for inline ultrafiltration.



---

2 PCS

6.1826.340

Pump tubing LFL (black/black), 3 stoppers

For the sample solution in inline dialysis.



1 PCS

6.1831.120

PEEK capillary 0.25 mm i.d., 45 cm



1 PCS

6.1831.160

PEEK capillary, 0.5 mm ID / 70 cm

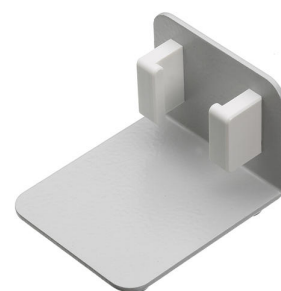


1 PCS

6.2057.130

Dialysis cell holder

Holder for the dialysis cell



1 PCS

6.2621.070

5 mm hex key for IC Sample Processors



1 PCS

**6.2714.010**

**Dialysis membrane (cellulose acetate)**

Nominal pore size : 0.2 µm. Set of 50 pieces. For inline dialysis



1 PCS

**6.2729.200**

**Low Volume dialysis cell**

Including four 6.2744.060 stoppers. For rapid Inline Dialysis.



1 PCS

**6.2744.000**

**Pressure screw PVDF**

With UNF 10/32 connection. For IC instruments, inline dialysis (connection of PTFE capillaries)



2 PCS

**6.2744.034**

**Coupling olive/UNF 10/32, 2x**

Connection between pressure screw and pump tubing. 2 pieces. For IC instruments with peristaltic pump.



2 PCS

**6.2744.070**

**Pressure screw short**

Short version. With UNF 10/32 connection. 5 pieces. For the connection of PEEK capillaries

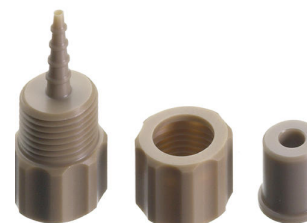


4 PCS

**6.2744.160**

**Nozzle/UNF 10/32 coupling with security device**

Security device for connecting pump tubing to a nozzle.



1 PCS

**6.2755.000**

**Tubing cartridge**

For the peristaltic pumps of IC instruments. Contact pressure adjustable.



1 PCS

**6.2831.010**

**Plastic tweezers**

For dialysis and filtration membranes

