



# Pick&Place

2.1014.0010

OMNIS Sample Robots Pick&Place Pick&Place

## 2.1014.0010

Qt.	Order no.	
1 PCS	1.1014.0010	Pick&Place module

Module for installation in the module plate of the Pick&Place of the OMNIS Sample Robot. This workstation takes up the sample beaker for the analysis. Used sensors are cleaned or parked in the storage beaker of the Pick&Place module between analyses. If stirring is required during the analysis, then a separate rod stirrer must be used for this workstation.



1 PCS

**6.01803.000**

**Silicone tubing 8/12 2.5 m**

Silicone tubing for connecting to the drainage of the Pick&Place module or pump module in order to channel any solution overflows that may occur safely into the waste canister.



---

1 PCS

**6.01804.500**

**Tubing adapter for drainage tubing**

Tubing adapter for drainage tubing on Pick&Place modules and pump modules in the OMNIS Sample Robot Pick&Place.



---

1 PCS

**6.02700.000**

**Safety shield for Pick&Place module**

Safety shield for Pick&Place modules



---

1 PCS

**6.02704.000**

**Tubing clip to workstation (10 pcs)**

For fixing in place the PVC or PTFE tubing that leads to the workstation.



For organizing tubing and cables between Pick&Place module and titrator



**Order no.****2.1006.0010 OMNIS Rod Stirrer Sample Robot**

Rod stirrer with permanently mounted cable (2.5 m) for direct connection to the OMNIS Sample Robot.

**6.01403.000 Titration head 6xNS14 / 3xNS9 (P&P)**

Titration head with 6 NS14 and 3 NS 9 openings for use in Pick&Place modules of the OMNIS Sample Robot Pick&Place

**6.01403.010 Titration head 4xM10 (P&P)**

Titration head with 4 M10 openings for use in Pick&Place modules of the OMNIS Sample Robot Pick&Place

**6.01403.020 Titration head 4xM10 for KFT (P&P)**

Titration head with 4 M10 openings for Karl Fischer titration in Pick&Place modules of the OMNIS Sample Robot Pick&Place with 4 M10 screw nipples and stoppers.



#### 6.01403.030 Titration head 3xNS14 / 4x6.4 mm (P&P)

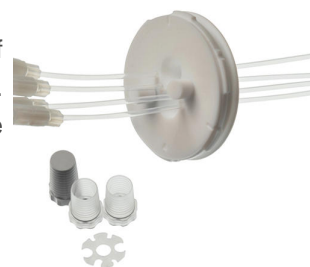
Titration head with 3 NS14 and 4x 6.4 mm openings for using 120 mL beakers in Pick&Place modules of the OMNIS Sample Robot Pick&Place with two retracted dosing tips. Prepared for being equipped with rinsing and aspiration tubing.



---

#### 6.01403.040 Titration head 2xNS14 (P&P)

Titration head with 2 NS14 openings for use in Pick&Place modules of the OMNIS Sample Robot Pick&Place with 3 retracted dosing tips. Prepared for being equipped with rinsing nozzles. One aspiration tube is already retracted into the titration head.



---

#### 6.01403.050 Titration head for KFT with reinforced tips (P&P)

Titration head for Karl Fischer titration in Pick&Place modules of the OMNIS Sample Robot Pick&Place. In addition to 2 reinforced antidiffusion tips, the titration head offers an opening for using an homogenizer (Polytron 1300D) or rod stirrer.



---

#### 6.01403.060 Titration head 3xNS14 / 4x6.4 mm for 200 mL disposable beaker (P&P)

Titration head with 3 NS14 and 4x 6.4 mm openings for using 200 mL PP disposable beakers (6.1459.310) or 150 mL beaker glasses (high shape, without spout) in Pick&Place modules of the OMNIS Sample Robot Pick&Place with two retracted dosing tips. Prepared for being equipped with rinsing and aspiration tubing.



**6.01404.020 Beaker adapter for 200 mL sample beaker**

Beaker adapter for centering the 200 mL sample beaker in the slide of the Pick&Place modules.



---

**6.01404.030 Beaker adapter for OMNIS 120 mL sample beaker**

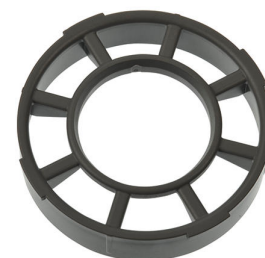
Beaker adapter for centering the 120 mL sample beaker in the slide of the Pick&Place modules



---

**6.01404.040 Beaker adapter for OMNIS 75 mL sample beaker**

Beaker adapter for centering the 75 mL sample beaker in the slide of the Pick&Place modules



---

**6.01404.050 Beaker adapter for 150 mL sample beaker**

Beaker adapter for centering the 150 mL sample beaker in the slide of the Pick&Place modules.

