

OMNIS Main Module L – WSM

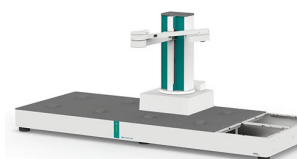
2.1012.0120

L OMNIS Sample Robot WSM 7 4 2 OMNIS Workstation Module

2.1012.0120

Qt.	Order no.	
1 PCS	1.1012.0120	OMNIS Main Module L – WSM

Main module for setting up an OMNIS Sample Robot WSM in size L. This module is equipped with the module and rack plate for up to 7 racks and 4 workstations. It is already equipped with the main lift and a gripper. Sample racks, gripper fingers, and up to 2 OMNIS Workstation Modules for sample processing can also be attached in order to use it to set up a functioning Sample Robot. The selection of these components proceeds in accordance with the application.



Order no.**2.1024.0010 OMNIS Workstation Module (1T/0P)**

Module for installation in the OMNIS Sample Robot WSM. This module contains a workstation for the automatic processing of sample vessels without pumps. The workstation takes up the sample beaker for the analysis. Used sensors can be cleaned or parked in the storage beaker of the workstation between analyses. If stirring is required during the analysis, then a separate rod stirrer or a magnetic stirrer can be attached for this workstation.



2.1024.0020 OMNIS Workstation Module (1T/2P)

Module for installation in the OMNIS Sample Robot WSM. This module contains a workstation for the automatic processing of sample vessels and two pumps for the automatic cleaning (rinsing and extraction) of sample vessels and sensors. The workstation takes up the sample beaker for the analysis. Used sensors can be cleaned or parked in the storage beaker of the workstation between analyses. If stirring is required during the analysis, then a separate rod stirrer or a magnetic stirrer can be installed for this workstation.



2.1024.0030 OMNIS Workstation Module (2T/4P)

Module for installation in the OMNIS Sample Robot WSM. This module contains 2 workstations for the automatic processing of sample vessels and 4 pumps for the automatic cleaning of sample vessels and sensors (rinsing and extraction) at both workstations. The workstations take up the sample beaker for the analysis. Used sensors can be cleaned or parked in the storage beakers of the workstations between analyses. If stirring is required during the analysis, then a separate rod stirrer or a magnetic stirrer can be installed for each workstation.



6.02041.010 OMNIS sample rack, 9 x 250 mL, (PP)

OMNIS sample rack for OMNIS Sample Robot Pick&Place, suitable for 9 sample beakers. The following sample beakers can be used: 6.01400.000, 6.01400.003, 6.01400.100.

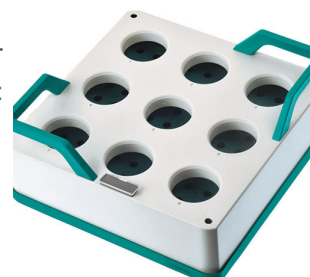
Plastic: Polypropylene (PP)



6.02041.020 OMNIS sample rack, 9 x 200 mL, (PP)

OMNIS sample rack for OMNIS Sample Robot Pick&Place, suitable for 9 sample beakers. The following sample beakers can be used: 6.1459.310.

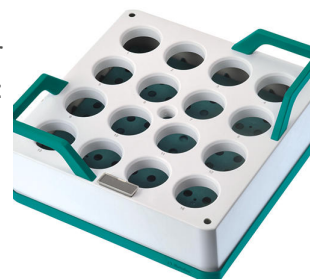
Plastic: Polypropylene (PP)



6.02041.030 OMNIS sample rack, 16 x 120 mL, (PP)

OMNIS sample rack for OMNIS Sample Robot Pick&Place, suitable for 16 sample beakers. The following sample beakers can be used: 6.01400.200, 6.01400.300, 6.01400.303.

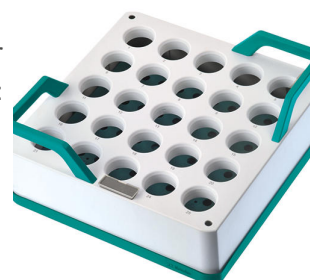
Plastic: Polypropylene (PP)



6.02041.040 OMNIS sample rack, 25 x 75 mL, (PP)

OMNIS sample rack for OMNIS Sample Robot Pick&Place, suitable for 25 sample beakers. The following sample beakers can be used: 6.01402.000, 6.01402.003, 6.1459.400.

Plastic: Polypropylene (PP)



6.02041.050 OMNIS sample rack, 9 x 150 mL, (PP)

OMNIS sample rack for OMNIS Sample Robot Pick&Place, suitable for 9 sample beakers. The following sample beakers can be used: 150 mL beaker (tall shape and without spout).

Plastic: Polypropylene (PP)



6.02064.020 Retainer for 200 mL sample beaker

Retainer for fixing the 200 mL sample beaker in place in the gripper fingers of the OMNIS Sample Robot Pick&Place.



6.02600.020 WSM dummy panel, front

Dummy panel for covering the front OMNIS Workstation Module position on a Sample Robot WSM M or L. This dummy panel is required in order to lock the Sample Robot WSM M or L when there is only 1 OMNIS Workstation Module installed at the rear position.



6.02600.030 WSM dummy panel, rear

Dummy panel for covering rear front OMNIS Workstation Module position on a Sample Robot WSM M or L. This dummy panel is required in order to lock the Sample Robot WSM M or L when there is only 1 OMNIS Workstation Module installed at the rear position.



6.02601.010 Gripper fingers 43 - 65 mm

Gripper fingers for OMNIS Sample Robot Pick&Place for gripping sample beakers with an outer diameter of 43 to 65 mm.



6.02601.020 Gripper fingers 50 - 72 mm

Gripper fingers for OMNIS Sample Robot Pick&Place for gripping sample beakers with an outer diameter of 50 to 72 mm.



6.02601.030 Gripper fingers 48-64 mm

Gripper fingers for OMNIS Pick&Place Sample Robot for gripping sample beakers with an outer diameter of 48 - 64 mm.



6.02601.040 Gripper fingers 28-48 mm

Gripper fingers for OMNIS Sample Robot Pick&Place for gripping sample beakers with an outer diameter of 28 - 48 mm.



The connector plate connects 2 OMNIS Workstation Modules on a Sample Robot WSM M or L, thus lending it additional stability.



This accessory kit contains all of the components required for the tubing setup for 1 rinsing pump and 1 aspiration pump on the pump module of the OMNIS Workstation Module (1T/2P). In addition to preassembled tubing with Luer connectors, each of these also includes 2 press clamps and pump tubing. A tool for simplifying attachment of the Luer connectors is also included in the set.



This accessory kit contains all of the components required for the tubing setup for 2 rinsing and 2 aspiration pumps on the pump module of the OMNIS Workstation Module (2T/4P). In addition to preassembled tubing with Luer connectors, each of these also includes 4 press clamps and pump tubing. A tool for simplifying attachment of the Luer connectors is also included in the set.



Four slide sleeves and rubber gripper fingers each for replacement on the gripper finger of the OMNIS Sample Robot.



6.05700.250

Consumable Kit OMNIS Gripper for 6.02601.030

Four rubber gripper fingers for replacement on the gripper finger of the OMNIS Sample Robot.



6.05800.540

Upgrade Pick&Place module WSM

This set contains all of the components required to extend an OMNIS Workstation Module (1T/0P) or (1T/2P) to include a second workstation. Sample throughput can be doubled as a result of the extension.



6.05800.560

Upgrade stirrer WSM

This set contains all of the components required to equip a workstation of an OMNIS Workstation Module with a magnetic stirrer.



6.05800.570

Upgrade peristaltic pump module WSM

This set contains all of the components that are required for the upgrade of an OMNIS Workstation Module involving the addition of 2 pumps. This set can be used not only to extend the number of pumps from 0 to 2, but also from 2 to 4, and enables the effective cleaning of sensors and sample vessels. In addition to the pumps required, all of the necessary tubing and canisters are included for equipping 1 rinsing pump and 1 aspiration pump each.

