



Equipaggiamento IC: MiPCT-ME

6.5330.160

Kit di accessori per il montaggio di un Dosino per la tecnica di arricchimento intelligente Metrohm con eliminazione della matrice (MiPCT-ME).

Parti incluse 6.5330.160

Qt.	Order no.	Descrizione
2 PCS	6.1014.200	Metrosep I Trap 1 - 100/4.0

The Metrosep I Trap 1 - 100/4.0 column is used to eliminate ionic, i.e. cationic and anionic, contaminants from aqueous solutions. Its use is especially recommended for the purification of the transfer water in combination with "MISP" or "Metrohm Inline Sample Preparation". Using the Metrosep I Trap 1 - 100/4.0 column can significantly reduce the influence of the transfer water on the system blank.



2 PCS

6.1580.150

807 Dosing Unit 5 mL without accessories

807 Dosing Unit with integrated data chip with 5 mL glass cylinder and light protection, mountable to a reagent bottle with ISO/DIN GL 45 glass thread.



1 PCS

6.1602.160

Bottle attachment GL 45 for eluents and reagents

For eluent, reagent, and rinsing bottles, with connectors for the adsorber tube and the aspiration tubing.



1 PCS

6.1608.070

Eluent bottle / 2 L / GL 45

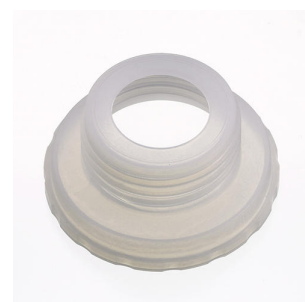


2 PCS

6.1618.020

Thread adapter S 40 to GL 45

Adapter for bottles with S40 thread (Merck...) to GL45.



1 PCS

6.1619.000

Adsorber tube for 807 Dosing Unit



1 PCS

6.1624.000

Adapter SGJ 14 for 6.1619.XXX Adsorber tube

Adapter SGJ 14. Part of 6.1619.010 for Dilution Sample Processor.



2 PCS

6.1805.040

FEP tubing / M6 / 9 cm

With light and kink protection



1 PCS

6.1805.120

FEP tubing / M6 / 100 cm

With light and kink protection



1 PCS

6.1808.060

T connector / M6 inner

3 M6 inner threads.



1 PCS

6.1819.110

FEP aspiration tubing to canister

Aspiration tubing to canister attachment with M6 connector. For the production of eluents.



1 PCS

6.1825.280

Transfer tubing PFA, 20 mL



2 PCS

6.1831.180

PEEK Capillary 0.5 mm i.d., 3 m

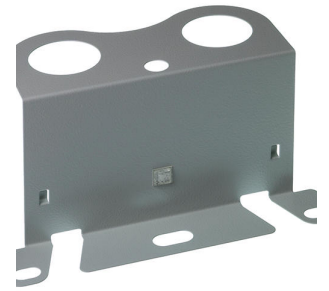


1 PCS

6.2057.210

Holder for Dosino to IC instruments

Mounting part for Dosinos at the IC instrument housing.



2 PCS

6.2744.010

Pressure screw 5x

With UNF 10/32 connection. For the connection of PEEK capillaries



3 PCS

6.2744.080

M6 thread / UNF 10/32 adapter

With M6 outer thread. For IC instruments.



1 PCS

6.2841.120

Liquid Handling Station, left

Combined rinsing and dilution station for sample changers with a Swing Head. To be assembled to the left of the tower.

