



943 Professional Thermostat Vario

2.943.0210

Il 943 Professional Thermostat Vario è un forno per colonne stand alone per max. due colonne con una lunghezza massima di 150 mm. Convince per la sua alta velocità di riscaldamento e la possibilità di far funzionare insieme due colonne di separazione fino a 80°C.

Parti incluse 2.943.0210

Qt.	Order no.	Descrizione
1 PCS	1.943.0010	943 Professional Thermostat / Reactor Vario



1 PCS

6.1831.100

PEEK capillary 0.25 mm i.d., 1 m



1 PCS

6.2151.020

Cable USB A - USB B 1.8 m

USB connecting cable



1 PCS

6.2621.100

3 mm hex key for IC Sample Processors



1 PCS

6.2621.140

Hexagon key 2.5 mm



1 PCS

6.2744.040

2 x UNF 10/32 coupling

For connecting 1/16 in. capillaries. For IC instruments



1 PCS

6.2744.070

Pressure screw short

Short version. With UNF 10/32 connection. 5 pieces. For the connection of PEEK capillaries

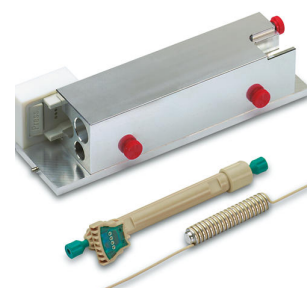


1 PCS

6.2845.600

Column holder complete to Professional Thermostat

Intelligent column holder for the Professional Thermostat



Accessori opzionali

Order no.	Descrizione	
6.1015.100	Metrosep BP 1 Guard/2.0 The Metrosep BP 1 Guard/2.0 is used to generate a sufficiently high working pressure in the flow path of post-column reagents. They are used in combination with a high-pressure pump for conveying the post-column reagent in the Professional Reactor.	
6.1602.200	Bottle cap 2 x M6, 1 x M8 to 6.1608.120 Bottle cap for eluent bottles made of PP for eluents, post-column derivatization solutions, etc. The PP eluent bottle can withstand gas pressure when this bottle cap is used.	
6.1608.120	PP eluent bottle, 2 L Eluent bottle for applications where glass should be avoided.	
6.2061.100	Bottle holder for Professional IC instruments Instrument cover and bottle holder for Professional IC instruments.	



Connects an IC module with the footprint of a Professional IC with a Compact IC



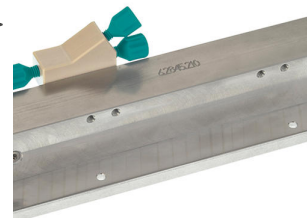
Intelligent reactor plate with reactor for PCR applications.



6.2845.110

HT reactor plate, complete, for Professional Reactor

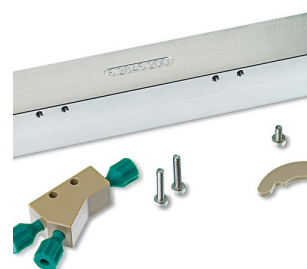
Reactor plate with reactor for PCR applications at high temperatures (> 120 °C). With PEEK reactor capillaries.



6.2845.200

Reactor complete to 6.2845.100

Spare reactor for the reactor plate



6.2845.210

HT reactor, complete, for 6.2845.110

Reactor for PCR applications at high temperatures (> 120 °C). With PEEK reactor capillaries.

