

« ProfIC Vario 9 AnCat » – système Professional IC Vario avec technique de préconcentration intelligente de Metrohm et élimination de la matrice inline (MiPCT-ME)

ProfIC Vario 9 AnCat




Le système Professional IC Vario doté de la technique de préconcentration intelligente inline de Metrohm, de l'élimination de la matrice inline, de la suppression séquentielle et de la détection de conductivité permet d'effectuer des analyses des anions et des cations dans des matrices complexes à l'état d'ultra-traces jusque dans la gamme basse des ppt (ng/L).

Domaines d'application typiques :

- Analyses des ultra-traces dans des échantillons provenant de centrales nucléaires et de centrales électriques traditionnelles
- Analyses de traces et ultra-traces dans des agents d'extraction et des matières organiques

Représentation schématique

Contenu de la livraison ProfIC Vario 9 AnCat

Qt.	Order no.	Description
2 PCS	2.786.0040	786 Swing Head Additional equipment for Robotic Sample Processors XL without titration or transfer heads.
		
3 PCS	2.800.0010	800 Dosino The 800 Dosino is a drive with write/read hardware for intelligent Dosing Units. With fixed cable (length 150 cm).
		
1 PCS	2.815.0130	815 Robotic USB Sample Processor XL (2T/0P) Robotic USB Sample Processor XL for the automatic processing of routine samples in series with large quantities and for complex sample preparation or parallel runs. Up to four pumps (membrane or peristaltic) and three dosing devices for Liquid Handling tasks can be connected. Because of the multitude of application variants, rack, stirrer, titration head, robotic arm, Swing Head, and sample vessels must be tailored to the application and ordered separately. The control is "stand alone" using Touch Control. The following software products can be selected for the PC control: tiemo™ titration software, MagIC Net chromatography software, viva voltammetry software, or OMNIS.
		

Compact and intelligent high performance conductivity detector for intelligent IC instruments. Outstanding temperature stability, the complete signal processing within the protected detector block and the latest generation of DSP – Digital Signal Processing – guarantee the highest precision of the measurement. No change of measuring ranges (not even automatic ones) is required, due to the dynamic working range.



The 940 Professional IC Vario TWO/SeS/PP is the intelligent two-channel IC instrument with sequential suppression (one channel) and a peristaltic pump for suppressor regeneration. The instrument can be used with any separation and detection methods.

Typical areas of application:

- Standard instrument for parallel anion and cation determinations
- Trace analysis for anions and cations
- Online monitoring for anions and cations



The Metrosep I Trap 1 - 100/4.0 column is used to eliminate ionic, i.e. cationic and anionic, contaminants from aqueous solutions. Its use is especially recommended for the purification of the transfer water in combination with "MISP" or "Metrohm Inline Sample Preparation". Using the Metrosep I Trap 1 - 100/4.0 column can significantly reduce the influence of the transfer water on the system blank.



Transfer robotic arm for liquid handling purposes



1 PCS

6.1462.040

Robotic arm with transfer head for 786 Swing Head,
right swinging

Transfer robotic arm for liquid handling purposes



1 PCS

6.1602.160

Bottle attachment GL 45 for eluents and reagents

For eluent, reagent, and rinsing bottles, with connectors for the adsorber
tube and the aspiration tubing.



1 PCS

6.1608.070

Eluent bottle / 2 L / GL 45

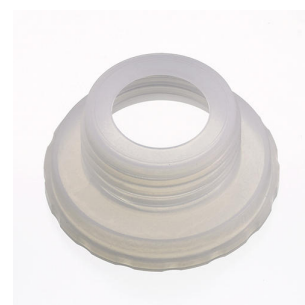


1 PCS

6.1618.020

Thread adapter S 40 to GL 45

Adapter for bottles with S40 thread (Merck...) to GL45.



1 PCS

6.1624.000

Adapter SGJ 14 for 6.1619.XXX Adsorber tube

Adapter SGJ 14. Part of 6.1619.010 for Dilution Sample Processor.



1 PCS

6.1805.120

FEP tubing / M6 / 100 cm

With light and kink protection



1 PCS

6.1819.110

FEP aspiration tubing to canister

Aspiration tubing to canister attachment with M6 connector. For the production of eluents.



1 PCS

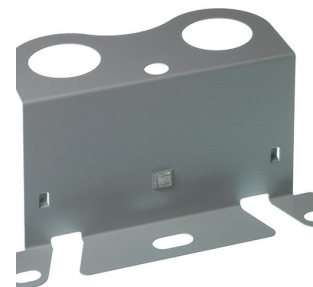
6.1825.280

Transfer tubing PFA, 20 mL





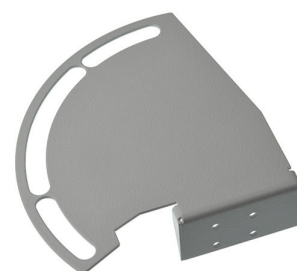
Mounting part for Dosinos at the IC instrument housing.



Retaining plate for 838 Advanced Sample Processors. For holding 2.5 or 11 mL vials.



Retaining plate for Professional IC Sample Processors. For holding 2.5 or 11 mL vials.



2 PCS

6.2629.000

Screw nut to needle holder IC

On Sample Processors



1 PCS

6.2744.010

Pressure screw 5x

With UNF 10/32 connection. For the connection of PEEK capillaries



3 PCS

6.2744.080

M6 thread / UNF 10/32 adapter

With M6 outer thread. For IC instruments.



2 PCS

6.2833.000

Needle/tube holder 1/8 in.

For IC/VA Sample Processors. For 1/8 in. tubes



1 PCS

6.2841.130

Liquid Handling Station, right

Combined rinsing and dilution station for sample changers with two towers and a Swing Head. To be assembled to the right of the tower.



2 PCS

6.2846.010

Sample needle made of zirconium oxide with PEEK tip

Sample needle for Sample Processors and Autosampler in ion chromatography. The PEEK tip guarantees secure piercing of the vial covering.



1 PCS

6.3032.150

807 Dosing Unit 5 mL

807 Dosing Unit with integrated data chip with 5 mL glass cylinder and light protection, mountable to a reagent bottle with ISO/DIN GL 45 glass thread. FEP tubing connection, antidiffusion tip.



1 PCS

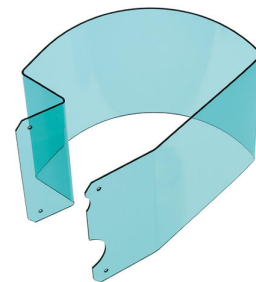
6.5330.160

IC equipment: MiPCT-ME





Accessory set for assembling a Dosino for Metrohm intelligent Preconcentration Technique with Matrix Elimination (MiPCT-ME).



Safety shield for 815 Robotic USB Sample Processor XL (2T/0P). Is utilized in IC when sample needles are used.



Accessoires optionnels

Order no.	Description	
2.941.0010	941 Eluent Production Module	
	<p>The 941 Eluent Production Module enables the automatic production of an eluent. It enables continuous working without manual intervention and guarantees stable retention times. It can be combined with all Metrohm IC instruments and is monitored by MagIC Net.</p>	
6.1010.310	Metrosep C PCC 1 HC/4.0	
	<p>For cation preconcentration and matrix elimination</p>	
6.1050.420	Metrosep C 4 - 150/4.0	
	<p>The Metrosep C 4 - 150/4.0 is the universal standard column in cation analysis for accomplishing high separating efficiency in a short time. The Metrosep C 4 - 150/4.0 is the ideal separation column for the analysis of alkaline and earth alkaline metals in aqueous media.</p>	
6.1050.500	Metrosep C 4 Guard/4.0	
	<p>The Metrosep C 4 Guard/4.0 contains the C-4 column material and is used to protect all Metrosep cation columns that have a substrate based on silica gel. Particles and contamination are reliably retained, considerably prolonging the service life of the analytical separation column. The economical price is an additional plus. The Metrosep C 4 Guard/4.0 also works based on the "On Column Guard System" and is screwed directly onto the separation column with virtually no dead volume.</p>	

6.1608.100

PE bottle 50 mL

Bottle for Extension Module Liquid Handling.



6.2769.110

EMPTY sensor for level sensor for 2 L bottles

This sensor, mounted in the 6.1626.000 bottle attachment, results in the level sensor EMPTY for 2 L bottles. Included are two sensor rods, one aspiration tubing and two holders for fixing the tubing to one of the sensor rods.



6.2820.000

Al foil

1000 circular sheets of 80 mm diameter. Thickness: 0.010 mm. Used together with 6.2037.030 Foil holder for 6.1432.210 Sample beaker. For 674 KF Sample Changer



6.2832.000

MSM Rotor A

Suppressor rotor for all IC instruments with MSM (Metrohm Suppressor Module)



6.2842.000

MSM-HC Rotor A

Suppressor rotor for all IC instruments with MSM-HC (Metrohm Suppressor Module with high capacity)



6.2842.020

Adapter sleeve, MSM

Not only the MSM Rotor A but also the MSM-LC Rotor A can be installed in the rotor housing with the aid of the adapter sleeve.



6.2844.000

MSM-LC Rotor A

Suppressor rotor for use with 2 mm columns.



6.5330.090

IC equipment: Additional eluent on the Eluent Production Module

Accessory set for Eluent Production Module. Contains all parts necessary for expansion by one eluent. The level sensor must be ordered in accordance with the application.



Professional chromatography software from Metrohm for controlling all intelligent Professional IC systems, Compact IC systems and their peripherals, all detectors and the various Auto samplers, 800 Dosino, 771 Compact Interface, etc. The software permits checks, data acquisition, data evaluation and data monitoring as well as report generation of ion chromatographic analyses.



Graphical user interface for routine operations, extensive database programs, method development, configuration and manual control panel; very flexible user management, efficient database operations, extensive data export functions, individually configurable report generator, control and monitoring of all system components and the chromatography results.

MagIC Net Professional complies fully with FDA Regulation 21 CFR Part 11 as well as GLP.

MagIC Net is available in 15 dialog languages: German, English, Chinese, Traditional Chinese, French, Italian, Spanish, Portuguese, Bulgarian, Czech, Hungarian, Japanese, Korean, Russian, Slovakian

With this version, the graphic user interface has been modernized, which improves, among other things, the scaling and sharpness of the user interface on 4K monitors.

1 license

The installation and documents are supplied on a USB flash drive.

Client/server-compatible chromatography software from Metrohm for controlling all intelligent Professional IC systems, Compact IC systems and their peripherals, all detectors and the various Autosamplers, 800 Dosino, 771 Compact Interface, etc.

The software permits checks, data acquisition, data evaluation and data monitoring as well as report generation of ion chromatographic analyses. Data and method are centrally stored on a Server.



Graphical user interface for routine operations, extensive database programs, method development, configuration and manual control panel; very flexible user management, efficient database operations, extensive data export functions, individually configurable report generator, control and monitoring of all system components and the chromatography results.

MagIC Net Multi complies fully with FDA Regulation 21 CFR Part 11 as well as with GLP.

MagIC Net is available in 15 dialog languages: German, English, Chinese, Traditional Chinese, French, Italian, Spanish, Portuguese, Bulgarian, Czech, Hungarian, Japanese, Korean, Russian, Slovakian

With this version, the graphic user interface has been modernized, which improves, among other things, the scaling and sharpness of the user interface on 4K monitors.

Performance for client/server systems with servers outside the in-house company network has been improved.

Client/server version with 3 licenses

Sample rack for 858 Professional Sample Processor, 815 Robotic USB Sample Processor XL, suitable for 35 sample vessels and 3 rinsing bottles. The following sample vessels and rinsing bottles can be used: 6.1608.100, 60 mL and 250 mL Nalgene FEP vessels.

Plastic: Polyvinyl chloride (PVC)

