



Eco IC

2.925.0020

La chromatographie ionique pour tous ! L'Eco IC constitue une option d'introduction à la chromatographie ionique à un prix très abordable. Cet appareil est particulièrement approprié pour les analyses de l'eau dans le cadre d'une utilisation de routine ou d'apprentissage dans des écoles ou des universités. Les éléments livrés comprennent le détecteur de conductivité, le Metrohm Suppressor Module « MSM » et le logiciel. Une automatisation ultérieure pour jusqu'à 36 échantillons ou l'emploi de l'ultrafiltration inline peuvent être envisagés à tout moment.

Contenu de la livraison 2.925.0020

Qt.	Order no.	Description
1 PCS	1.850.9010	IC Conductivity Detector

Compact and intelligent high performance conductivity detector for intelligent IC instruments. Outstanding temperature stability, the complete signal processing within the protected detector block and the latest generation of DSP – Digital Signal Processing – guarantee the highest precision of the measurement. No change of measuring ranges (not even automatic ones) is required, due to the dynamic working range.



Ion chromatography for everyone! The Eco IC is the entry into ion chromatography at a very affordable price. The instrument is particularly suitable for water analysis in routine operations and for training purposes at schools and universities. Included in the scope of delivery are the conductivity detector, the Metrohm Suppressor Module ("MSM") and the software. Later automation for up to 36 samples and the use of Inline Ultrafiltration are possible at any time.



For the connection of 1/16 in. capillaries. Used in conjunction with MSM auxiliary solutions and in Metrohm Inline Sample Preparation.



For eluent, reagent, and rinsing bottles, with connectors for the adsorber tube and the aspiration tubing.



Bottle for auxiliary solutions.



1 PCS

6.1608.070

Eluent bottle / 2 L / GL 45



1 PCS

6.1609.000

Adsorbing tube, large and bent

For filling with adsorber material.



1 PCS

6.1803.030

PTFE capillary 0.5 mm i.d. / 3 m

Capillary for inline dialysis, for Dialysis Unit, IC Dialysis Sample Processor,
IC Liquid Handling Dialysis Unit



1 PCS

6.1803.040

PTFE capillary 0.5 mm i.d. / 1 m

Capillary for sample handling in IC.



1 PCS

6.1807.010

Y-connector for tubing 6-9 mm i.d.

Connector for waste tubing



2 PCS

6.1816.020

Silicone tubing 6 mm i.d., 1 m

For waste tubing.

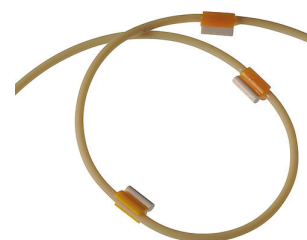


1 PCS

6.1826.420

PharMed® pump tubing (orange/yellow), 3-stopper

For MSM regeneration with peristaltic pump.



1 PCS

6.1831.100

PEEK capillary 0.25 mm i.d., 1 m



1 PCS

6.2023.020

Clip for SGJ 14/15

Clip for SGJ 14/16



1 PCS

6.2151.020

Cable USB A - USB B 1.8 m

USB connecting cable



1 PCS

6.2251.000

Colored sleeves for capillaries

Colored pieces of heat shrink tubing for capillary coding. Three pieces each of five different colors.



1 PCS

6.2617.010

Tool for piston seal

For removing and assembling the piston seal for all standard pump heads



2 PCS 6.2621.000 Adjustable wrench
Max. opening: 20 mm. For IC instruments



1 PCS 6.2621.030 Hexagon key 4 mm



1 PCS 6.2621.050 1/4 in. wrench
For 1/4 in. screws. For IC instruments



1 PCS 6.2621.080 Capillary cutter

Cutting tool for simple cutting of plastic capillaries, 1/16" and 1/8", including 5 replacement blades.



1 PCS

6.2621.100

3 mm hex key for IC Sample Processors



2 PCS

6.2739.000

Wrench

For tightening connectors



1 PCS

6.2743.080

Stopper for overflow (ProfIC), 5 pieces

For Professional IC instruments



1 PCS

6.2744.014

Pressure screw 2x

With UNF 10/32 connection. For the connection of PEEK capillaries



1 PCS

6.2744.020

Luer/UNF coupling

For IC instruments



1 PCS

6.2744.035

Coupling olive/UNF 10/32, 1x

Connection between pressure screw and pump tubing. 1 piece. For IC instruments with peristaltic pump.



3 PCS

6.2744.040

2 x UNF 10/32 coupling

For connecting 1/16 in. capillaries. For IC instruments



2 PCS

6.2744.070

Pressure screw short

Short version. With UNF 10/32 connection. 5 pieces. For the connection of PEEK capillaries



1 PCS

6.2744.180

Pump tubing connector with security lock and filter

For the connection of a pump tubing and a capillary with built-in filter

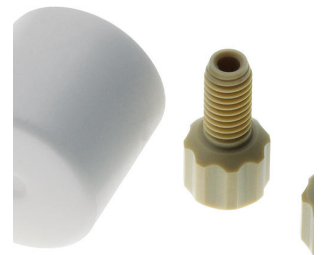


1 PCS

6.2744.210

Tubing adapter for aspiration filter (ProfIC)

For Professional IC instruments



1 PCS

6.2816.020

Syringe 10 mL with Luer connection

For various applications in IC and VA



1 PCS

6.2816.040

Purge tubing

With PTFE tubing and Luer connection. For syringes. For aspirating eluents.



1 PCS

6.2821.090

Aspiration filter

Pore size: 27 µm. Set of 5 pieces. For aspiration tubing (6.1834.000) and filter tubes (6.1821.040) and (6.1821.050).

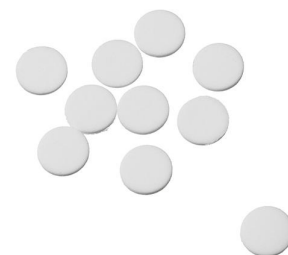


1 PCS

6.2821.130

Spare filter for inline filter

Spare filter for inline filter.



1 PCS

6.2832.000

MSM Rotor A

Suppressor rotor for all IC instruments with MSM (Metrohm Suppressor Module)



1 PCS

6.2835.010

Connecting piece to MSM and SPM module

Universal connecting piece for MSM in Professional IC Vario and Compact Flex instruments and for MSM-HC and SPM module. With inlets and outlets.



Not only the MSM Rotor A but also the MSM-LC Rotor A can be installed in the rotor housing with the aid of the adapter sleeve.



Accessoires optionnels

Order no.	Description
2.948.0010	<p>948 Continuous IC Module, CEP</p> <p>Automated hydroxide eluent production takes place with the 948 Continuous IC Module. Isocratic eluents can be produced and gradients can be run.</p> <p>The 948 Continuous IC Module, CEP is comprised of the following parts:</p> <ul style="list-style-type: none">• 948 Continuous IC Module• Eluent Producer Cartridge (EPC, 6.02850.200)• Continuous anion trap (CT, 6.02850.100)• High-pressure degasser (H-DEG, 6.02850.000) <p>Example methods according to 948 Continuous IC Module manual.</p>



6.01032.410	Metrosep A Supp 17 - 100/4.0
-------------	------------------------------

The Metrosep A Supp 17 columns are anion separation columns for use at room temperature with a very good price-performance ratio. The Metrosep A Supp 17 - 100/4.0 enables rapid separation of the standard anions. Thanks to its great flexibility with respect to flow rates (up to 1.8 mL/min), very short analysis times can be achieved, depending on the separation problem.



6.01032.420	Metrosep A Supp 17 - 150/4.0
-------------	------------------------------

The Metrosep A Supp 17 - 150/4.0 separation column is the column of choice for anion determinations that require good separating efficiency and short separation times at room temperature. The maximum flow rate of 1.4 mL/min then also makes it possible to optimize the determination. The Metrosep A-Supp-17 columns convince with their good price-performance ratio.



6.01032.430 Metrosep A Supp 17 - 250/4.0

The Metrosep A Supp 17 - 250/4.0 combines high separating efficiency with a good price-performance ratio without requiring the use of a column oven. The polystyrene-divinylbenzene basic material used guarantees a long service life for the column. Complex separation tasks can be solved on this column.



6.01032.500 Metrosep A Supp 17 Guard/4.0

The Metrosep A Supp 17 Guard/4.0 reliably protects the Metrosep A Supp 17 analytical separation columns against contamination. Thanks to the "On Column Guard System", the guard column is very easy to handle. The guard column screws easily onto the analytical column. No tools are required.



6.01032.510 Metrosep A Supp 17 S-Guard/4.0

The Metrosep A Supp 17 S-Guard/4.0 reliably protects the Metrosep A Supp 17 analytical separation columns against contamination. The guard column is simply connected to the separation column using capillary connections. No tools are required.



6.05800.060 Upgrade Kit: IC Eco

Upgrade Kit for retrofitting the Eco IC with a pulsation absorber.



6.2061.150

Safety bottle holder for Eco IC

Additional bottle holder for Basic IC and Eco IC instruments



6.2842.100

MSM-HC Rotor A, Hydroxide

Suppressor rotor with high capacity for hydroxide eluents for all IC instruments with MSM-HC (Metrohm Suppressor Module with high capacity).



Client/server-compatible chromatography software from Metrohm for controlling all intelligent Professional IC systems, Compact IC systems and their peripherals, all detectors and the various Autosamplers, 800 Dosino, 771 Compact Interface, etc.

The software permits checks, data acquisition, data evaluation and data monitoring as well as report generation of ion chromatographic analyses. Data and method are centrally stored on a Server.



Graphical user interface for routine operations, extensive database programs, method development, configuration and manual control panel; very flexible user management, efficient database operations, extensive data export functions, individually configurable report generator, control and monitoring of all system components and the chromatography results.

MagIC Net Multi complies fully with FDA Regulation 21 CFR Part 11 as well as with GLP.

MagIC Net is available in 15 dialog languages: German, English, Chinese, Traditional Chinese, French, Italian, Spanish, Portuguese, Bulgarian, Czech, Hungarian, Japanese, Korean, Russian, Slovakian

With this version, the graphic user interface has been modernized, which improves, among other things, the scaling and sharpness of the user interface on 4K monitors.

Performance for client/server systems with servers outside the in-house company network has been improved.

Client/server version with 3 licenses
