



920 Absorber Module

2.920.0010

El 920 Absorber Module une el Combustion Module con el cromatógrafo iónico. El 920 Absorber Module se encarga de que los compuestos en forma gaseosa de los analitos se disuelvan y se añadan a la CI. Es responsable de todo el Liquid Handling. Además de la CI de combustión se puede utilizar también para el análisis de gases.

Partes/accesorios 2.920.0010

Qt.	Order no.	Descripción
2 PCS	1.800.0040	800 Dosino (cable length 0.65 m)
Drive with write/read hardware for intelligent dosing units. With permanently attached cable (length 0.65 m).		



The 920 Absorber Module combines the Combustion Module with the ion chromatograph. The 920 Absorber Module ensures that the gaseous compounds of the analytes are dissolved and channeled to the IC. It is responsible for the entire Liquid Handling. In addition to Combustion IC, it can also be used for gas analysis.



High-capacity anion column, which is used to purify the eluent flow. Even chemicals of the highest quality level, e.g. "Ultrapur" or "puriss", can still contain minimal anion contaminations. These are reliably held back by the Metrosep A Trap 1 - 100/4.0.

This column is primarily used with gradient applications.



The Metrosep I Trap 1 - 100/4.0 column is used to eliminate ionic, i.e. cationic and anionic, contaminants from aqueous solutions. Its use is especially recommended for the purification of the transfer water in combination with "MISP" or "Metrohm Inline Sample Preparation". Using the Metrosep I Trap 1 - 100/4.0 column can significantly reduce the influence of the transfer water on the system blank.



For pistons for 807 Dosing Units or cylinder units OMNIS.



1 PCS

6.1602.150

Bottle attachment / GL 45 - 3 x UNF 10/32

For the connection of 1/16 in. capillaries. Used in conjunction with MSM auxiliary solutions and in Metrohm Inline Sample Preparation.



2 PCS

6.1602.160

Bottle attachment GL 45 for eluents and reagents

For eluent, reagent, and rinsing bottles, with connectors for the adsorber tube and the aspiration tubing.



1 PCS

6.1608.050

Drying bottle / 100 mL / GL 45



2 PCS

6.1608.070

Eluent bottle / 2 L / GL 45



2 PCS

6.1609.000

Adsorbing tube, large and bent

For filling with adsorber material.

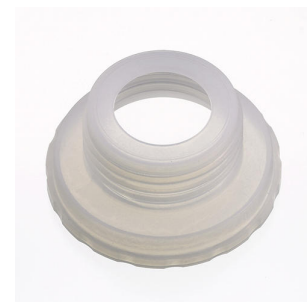


2 PCS

6.1618.020

Thread adapter S 40 to GL 45

Adapter for bottles with S40 thread (Merck...) to GL45.



3 PCS

6.1803.030

PTFE capillary 0.5 mm i.d. / 3 m

Capillary for inline dialysis, for Dialysis Unit, IC Dialysis Sample Processor, IC Liquid Handling Dialysis Unit

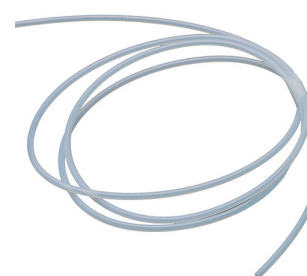


1 PCS

6.1803.130

Capillary 1/8 in. / 1/16 in. i.d. / 1.5 m

Connecting capillary from the eluent components to the Eluent Synthesizer



4 PCS

6.1803.160

PTFE capillary, 0.75 mm ID / 3 m

PTFE capillary for use with the 920 Absorber Module.



2 PCS

6.1805.010

FEP tubing / M6 / 13 cm

With light and kink protection.



2 PCS

6.1805.030

FEP tubing / M6 / 150 cm

With light and kink protection



1 PCS

6.1808.060

T connector / M6 inner

3 M6 inner threads.



1 PCS

6.1808.280

Adapter 807 Dosing Unit Port 4, M6 inner

Adapter for using Port 4 of the 807 dosing Unit for connection with an FEP tubing / M6.



2 PCS

6.1816.080

Silicone tubing 6 mm i.d. / 2 m

Drainage tubing to the "Waste Collector".



2 PCS

6.1819.100

FEP aspiration tubing to 2 L bottle

Aspiration tubing to bottle attachment with M6 connector. For the production of eluents.



1 PCS

6.1825.290

PEEK sample loop 250 μ L

Sample loop for «Metrohm intelligent Partial loop Technique» (MiPT) and for PILS (particle into liquid sampler). With 2 Peek pressure screws.



1 PCS

6.1831.040

PEEK capillary 0.5 mm i.d., 15 cm

For inline dialysis. For IC Dialysis Unit, IC Dialysis Sample Processor, IC Liquid Handling Dialysis Unit



2 PCS

6.2023.020

Clip for SGJ 14/15

Clip for SGJ 14/16



2 PCS

6.2057.230

Dosino holder for the Absorber Module

Holder for fastening Dosinos to the Absorber Module.



1 PCS

6.2151.020

Cable USB A - USB B 1.8 m

USB connecting cable



1 PCS

6.2251.000

Colored sleeves for capillaries

Colored pieces of heat shrink tubing for capillary coding. Three pieces each of five different colors.



1 PCS

6.2421.000

Absorber tube to the Absorber Module

Absorber tube for the absorption of the combustion gases from the Combustion Module.



1 PCS

6.2621.080

Capillary cutter

Cutting tool for simple cutting of plastic capillaries, 1/16" and 1/8", including 5 replacement blades.



3 PCS

6.2744.010

Pressure screw 5x

With UNF 10/32 connection. For the connection of PEEK capillaries



3 PCS

6.2744.080

M6 thread / UNF 10/32 adapter

With M6 outer thread. For IC instruments.



4 PCS

6.2744.090

Pressure screw long

Long version. With UNF 10/32 connection. 2 pieces. For the connection of PEEK capillaries (MCS and Sample degasser)



1 PCS

6.2744.170

Pressure screw PEEK UNF 1/4-28, 3 pieces

Fixing connecting capillaries of the eluent components at the Eluent Synthesizer



1 PCS

6.2744.200

Adapter UNF 10/32 outer / M6 inner

Connecting 1/16 in. PEEK capillaries and transfer tubing (M6)



8 PCS

6.2744.220

Screw stopper 10/32 long

For Professional IC Instruments. For sealing unused ports of degassers and MCS.

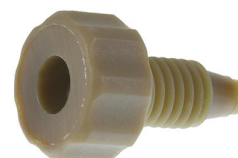


2 PCS

6.2744.350

PEEK pressure screw 14 mm, 3 pcs.

With UNF 10/32 connector. For the connection of PEEK capillaries in the Absorber Module.



1 PCS

6.2766.000

Holder for absorber tubing

Holder for fastening the absorber tubing in the Absorber Module.



1 PCS

6.2766.010

Holder for inlet valve

Holder for inlet valve to the Absorber Module.



1 PCS

6.2824.170

Inlet valve PEEK

Metal-free check valve for the inlet side of the IC pump heads of the devices 940, 930, 925, 883, 882, 881, and 850.



1 PCS

6.3032.150

807 Dosing Unit 5 mL

807 Dosing Unit with integrated data chip with 5 mL glass cylinder and light protection, mountable to a reagent bottle with ISO/DIN GL 45 glass thread. FEP tubing connection, antidiffusion tip.



1 PCS

6.3032.210

807 Dosing Unit 10 mL

807 Dosing Unit with integrated data chip with 10 mL glass cylinder and light protection, mountable to a reagent bottle with ISO/DIN GL 45 glass thread. FEP tubing connection, antidiffusion tip.



Accesorios opcionales

Order no.	Descripción
6.5336.000	IC equipment: Waste Collector
	Waste Collector for up to five waste capillaries.

