



## IC equipment: Inline dilution

6.5330.120

Accessory set for Inline Dilution. For use with the 858 Professional Sample Processor, 800 Dosino and 741 Magnetic Stirrer.

Below, the accessories are grouped into Scope of delivery and Optional accessories.  
Please keep this printout at hand for ordering replacement material.  
These lists may be subject to change.

### Scope of delivery 6.5330.120

Qt.	Order no.	Description
1 PCS	6.01808.010	Y tubing connector, PP, 3 x 7-8 mm
		Connector for waste tubing



1 PCS

6.1562.130

Transfer Tubing with holder 2 x M6 / 10 mL to  
Sample Processors

Transfer tubing for dilution and preconcentration using a Dosino and  
Sample Processor.



1 PCS

6.1580.210

807 Dosing Unit 10 mL without accessories

807 Dosing Unit with integrated data chip with 10 mL glass cylinder and  
light protection, mountable to a reagent bottle with ISO/DIN GL 45 glass  
thread.



1 PCS

6.1602.160

Bottle attachment GL 45 for eluents and reagents

For eluent, reagent, and rinsing bottles, with connectors for the adsorber  
tube and the aspiration tubing.



1 PCS

6.1608.070

Eluent bottle / 2 L / GL 45

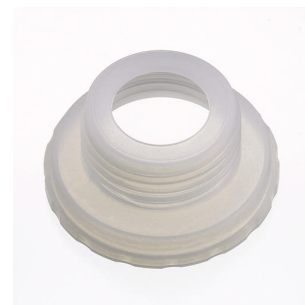


1 PCS

6.1618.020

Thread adapter S 40 to GL 45

Adapter for bottles with S40 thread (Merck...) to GL45.



---

1 PCS

6.1619.000

Adsorber tube for 807 Dosing Unit



---

1 PCS

6.1624.000

Adapter SGJ 14 for 6.1619.XXX Adsorber tube

Adapter SGJ 14. Part of 6.1619.010 for Dilution Sample Processor.



---

1 PCS

6.1803.070

PTFE capillary 0.97 mm i.d. / 40 cm

Capillary for filtration, for IC Filtration Sample Processor, IC Liquid Handling Filtration Unit



2 PCS

6.1803.080

PTFE capillary 0.97 mm i.d. / 1 m

Capillary for filtration, for IC Filtration Sample Processor, IC Liquid Handling Filtration Unit



---

1 PCS

6.1805.120

FEP tubing / M6 / 100 cm

With light and kink protection



---

1 PCS

6.1816.070

Silicone tubing 8/12 mm, 1 m

For the IC Sample Center



---

1 PCS

6.1819.110

FEP aspiration tubing to canister

Aspiration tubing to canister attachment with M6 connector. For the production of eluents.



1 PCS

6.1826.380

Pump tubing LFL (gray/gray), 3 stoppers

For Inline Dilution



---

1 PCS

6.1903.000

Stirring bar / 8 x 3 mm

Stirring bar with magnetic core, PTFE covering, 8 mm long with 3 mm diameter.



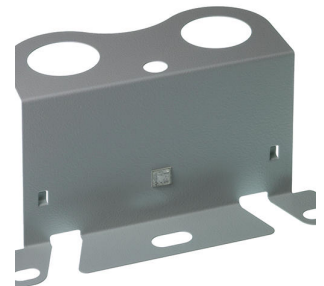
---

1 PCS

6.2057.210

Holder for Dosino to IC instruments

Mounting part for Dosinos at the IC instrument housing.



---

1 PCS

6.2744.010

Pressure screw 5x

With UNF 10/32 connection. For the connection of PEEK capillaries



1 PCS

6.2744.034

Coupling olive/UNF 10/32, 2x

Connection between pressure screw and pump tubing. 2 pieces. For IC instruments with peristaltic pump.

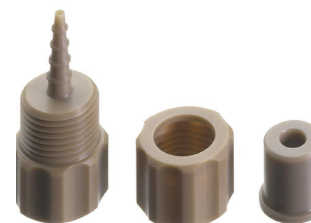


1 PCS

6.2744.160

Nozzle/UNF 10/32 coupling with security device

Security device for connecting pump tubing to a nozzle.



1 PCS

6.2744.200

Adapter UNF 10/32 outer / M6 inner

Connecting 1/16 in. PEEK capillaries and transfer tubing (M6)



1 PCS

6.2841.120

Liquid Handling Station, left

Combined rinsing and dilution station for sample changers with a Swing Head. To be assembled to the left of the tower.

