



807 Dosing Unit 5 mL

6.3032.150

807 Dosing Unit with integrated data chip with 5 mL glass cylinder and light protection, mountable to a reagent bottle with ISO/DIN GL 45 glass thread. FEP tubing connection, antidiffusion tip.

Below, the accessories are grouped into Scope of delivery and Optional accessories.

Please keep this printout at hand for ordering replacement material.

These lists may be subject to change.

Scope of delivery 6.3032.150

Qt.	Order no.	Description
1 PCS	6.1446.030	Ball stopper / B-14/(15)
		For the movable holding of buret tips in titration vessels



1 PCS

6.1446.040

Threaded stopper / M6



1 PCS

6.1543.060

Tip / M6 thread

Tip with M6 thread. Together with the 6.1805.160 capillary and the 6.1446.030 link stopper, it makes up the entire 6.1537.010 buret tip.



1 PCS

6.1543.200

Titration tip / M6 thread

Titration tip with antidiffusion valve.



1 PCS

6.1619.000

Adsorber tube for 807 Dosing Unit



1 PCS

6.1805.100

FEP tubing / M6 / 40 cm

With light and kink protection



1 PCS

6.1829.010

FEP aspiration tube M6, 0.25 m

With M 6 thread. For Dosing Unit



1 PCS

6.2008.030

Buret tip storage vessel for 807 Dosing Unit

Together with the 6.2008.050 storage vessel holder, it provides a holder for the buret tip on the 807 Dosing Unit.



1 PCS

6.2008.050

Storage vessel holder for 807 Dosing Unit

Together with the 6.2008.030 buret tip storage vessel, it provides a holder for the buret tip on the 807 Dosing Unit.



1 PCS

6.2244.020

Cards for intelligent Exchange Unit

Set of 10 pieces, different colors.



1 PCS

6.2739.000

Wrench

For tightening connectors



0

6.2803.000

Grease (1 oz.)

Special quality (without silicone). For grease-free ground joint connections see 6.2713.XXX



1 PCS





6.2803.010

Grease (2 g)

Special quality (without silicone). For grease-free ground joint connections see 6.2713.XXX



Optional accessories

Order no.	Description	
6.1574.150	Cylinder element glass 5 mL Glass cylinder element complete with cylinder, piston, cylinder base, valve disk, and centering tube. For 807 Dosing Unit 5 mL.	
6.1608.020	Glass bottle / 1000 mL / GL 45 Bottle for auxiliary solutions.	
6.1608.023	Amber glass bottle / 1000 mL / GL 45 For Exchange Units. Bottle for auxiliary solutions.	
6.1608.030	Round glass bottle / 1000 mL / GL 45	

6.1608.040 Bottle PE / 1000 mL / GL 45
For Exchange Units. Bottle for auxiliary solutions.



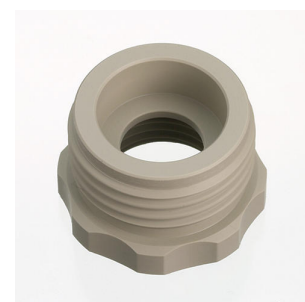
6.1608.050 Drying bottle / 100 mL / GL 45



6.1608.060 Bottle / 100 mL



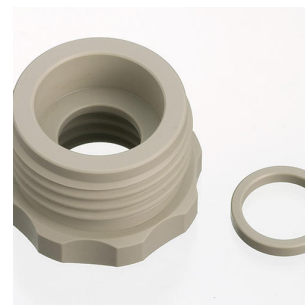
6.1618.000 Thread adapter 32 mm to GL 45
Adapter for bottles with 32 mm thread (Fluka, Riedel de-Haen 500 mL...) to GL45



6.1618.010

Thread adapter 28 mm to GL 45

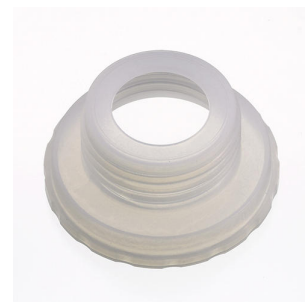
Adapter for bottles with 28 mm thread (Fisher...) to GL45



6.1618.020

Thread adapter S 40 to GL 45

Adapter for bottles with S40 thread (Merck...) to GL45.



6.1618.050

Thread adapter 40 mm to GL 45

Adapter for bottles with 40 mm thread to GL45.



6.1618.060

Thread adapter GL 45 to GL 45

Thread adapter GL45 to GL45; e.g. for reagent bottles with extended flange



6.1808.280

Adapter 807 Dosing Unit Port 4, M6 inner

Adapter for using Port 4 of the 807 dosing Unit for connection with an FEP tubing / M6.

