



942 Extension Module Vario Prep 2

2.942.0020

The 942 Extension Module Vario Prep 2 is an extension module for the Professional IC Vario line of instruments. It multiplies the possibilities of Inline Sample Preparation and Liquid Handling in Professional IC Vario systems.

Typical applications

- Inline Dialysis in two-channel Vario systems
- Inline Dialysis in systems without sample changers
- Column switching and cutting techniques

Below, the accessories are grouped into Scope of delivery and Optional accessories. Please keep this printout at hand for ordering replacement material. These lists may be subject to change.

Scope of delivery 2.942.0020

Qt.	Order no.	Description
-----	-----------	-------------

The 942 Extension Module Vario Prep 2 is an extension module for the Professional IC Vario line of instruments. It multiplies the possibilities of Inline Sample Preparation and Liquid Handling in Professional IC Vario systems.



Typical applications

- Inline Dialysis in two-channel Vario systems
- Inline Dialysis in systems without sample changers
- Column switching and cutting techniques

For all IC instruments



For injection valve, with 2 PEEK pressure screws



For the sample solution in inline dialysis.



1 PCS

6.1831.060

PEEK capillary 0.5 mm i.d., 1 m

For inline dialysis and for Sample Changers. For IC Dialysis Unit, IC Sample Processor, Compact IC Autosampler, IC Filtration Sample Processor, IC Dialysis Sample Processor, IC Liquid Handling Dialysis Unit



1 PCS

6.1831.100

PEEK capillary 0.25 mm i.d., 1 m



1 PCS

6.2156.060

Cable Extension Module - Professional IC, 40 cm

Cable connecting the extension module with a Professional IC instrument



1 PCS

6.2251.000

Colored sleeves for capillaries

Colored pieces of heat shrink tubing for capillary coding. Three pieces each of five different colors.





With UNF 10/32 connection. For the connection of PEEK capillaries



Connection between pressure screw and pump tubing. 2 pieces. For IC instruments with peristaltic pump.



Short version. With UNF 10/32 connection. 5 pieces. For the connection of PEEK capillaries

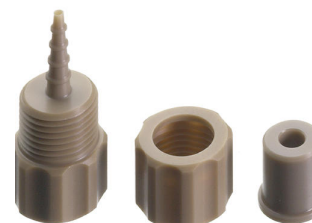


2 PCS

6.2744.160

Nozzle/UNF 10/32 coupling with security device

Security device for connecting pump tubing to a nozzle.



Optional accessories

Order no.	Description	
6.2057.130	Dialysis cell holder Holder for the dialysis cell	
6.2103.170	Adapter to Leak Sensor at Professional IC Adapter to connect two leak sensors to a Professional IC instrument	
6.2156.070	Cable Extension Module - Professional IC, 1 m Cable connecting the extension module with the Professional IC instrument	
6.5332.000	IC tubing kit for second extension module	

Client/server-compatible chromatography software from Metrohm for controlling all intelligent Professional IC systems, Compact IC systems and their peripherals, all detectors and the various Autosamplers, 800 Dosino, 771 Compact Interface, etc.

The software permits checks, data acquisition, data evaluation and data monitoring as well as report generation of ion chromatographic analyses. Data and method are centrally stored on a Server.



Graphical user interface for routine operations, extensive database programs, method development, configuration and manual control panel; very flexible user management, efficient database operations, extensive data export functions, individually configurable report generator, control and monitoring of all system components and the chromatography results.

MagIC Net Multi complies fully with FDA Regulation 21 CFR Part 11 as well as with GLP.

MagIC Net is available in 15 dialog languages: German, English, Chinese, Traditional Chinese, French, Italian, Spanish, Portuguese, Bulgarian, Czech, Hungarian, Japanese, Korean, Russian, Slovakian

With this version, the graphic user interface has been modernized, which improves, among other things, the scaling and sharpness of the user interface on 4K monitors.

Performance for client/server systems with servers outside the in-house company network has been improved.

Client/server version with 3 licenses
