



OMNIS Workstation Module (1T/2P)

2.1024.0020

Module for installation in the OMNIS Sample Robot WSM. This module contains a workstation for the automatic processing of sample vessels and two pumps for the automatic cleaning (rinsing and extraction) of sample vessels and sensors. The workstation takes up the sample beaker for the analysis. Used sensors can be cleaned or parked in the storage beaker of the workstation between analyses. If stirring is required during the analysis, then a separate rod stirrer or a magnetic stirrer can be installed for this workstation.

Below, the accessories are grouped into Scope of delivery and Optional accessories.
Please keep this printout at hand for ordering replacement material.
These lists may be subject to change.

Scope of delivery 2.1024.0020

Qt.	Order no.	Description
-----	-----------	-------------

Module for installation in the OMNIS Sample Robot WSM. This module contains a workstation for the automatic processing of sample vessels and 2 pumps for the automatic cleaning (rinsing and extraction) of sample vessels and sensors. The workstation takes up the sample beaker for the analysis. Used sensors can be cleaned or parked in the storage beaker of the workstation between analyses. If stirring is required during the analysis, then a separate rod stirrer or a magnetic stirrer can be installed for this workstation.



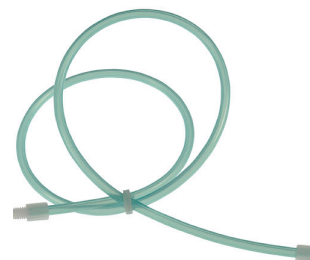
Aspiration tip for automated OMNIS titrations.



Tubing adapter for drainage tubing on Pick&Place modules and pump modules in the OMNIS Sample Robot Pick&Place.



With light protection and protection against kinks.



1 PCS

6.01805.010

PTFE tubing connection / M8 / 66.5 cm

With light protection and protection against kinks.

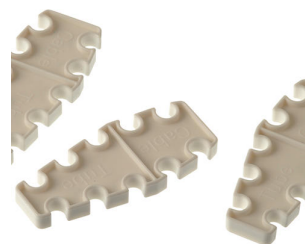


1 PCS

6.02705.000

Tubing and cable guide

For organizing tubing and cables between Pick&Place module and titrator



1 PCS

6.05001.110

WSM accessory kit (1T/2P)

This accessory kit contains all of the components required for the tubing setup for 1 rinsing pump and 1 aspiration pump on the pump module of the OMNIS Workstation Module (1T/2P). In addition to preassembled tubing with Luer connectors, each of these also includes 2 press clamps and pump tubing. A tool for simplifying attachment of the Luer connectors is also included in the set.



2 PCS

6.1621.000

Container 10 L

As rinsing or waste container in automated systems.



2 PCS

6.1621.100

Cap for 10-L container

Cap for 10-L container. For easy and safe transportation of filled containers.



1 PCS

6.2709.070

Guiding sleeve

For fixation of buret and dosing tips in titration heads and electrode holders



3 PCS

6.2740.020

Spray nozzle

For the fine-spraying of the rinsing solution.



Optional accessories

Order no.	Description	
2.1006.0010	OMNIS Rod Stirrer Sample Robot Rod stirrer with permanently mounted cable (2.5 m) for direct connection to the OMNIS Sample Robot.	
6.01403.000	Titration head 6xNS14 / 3xNS9 (P&P) Titration head with 6 NS14 and 3 NS 9 openings for use in Pick&Place modules of the OMNIS Sample Robot Pick&Place	
6.01403.010	Titration head 4xM10 (P&P) Titration head with 4 M10 openings for use in Pick&Place modules of the OMNIS Sample Robot Pick&Place	
6.01403.020	Titration head 4xM10 for KFT (P&P) Titration head with 4 M10 openings for Karl Fischer titration in Pick&Place modules of the OMNIS Sample Robot Pick&Place with 4 M10 screw nipples and stoppers.	

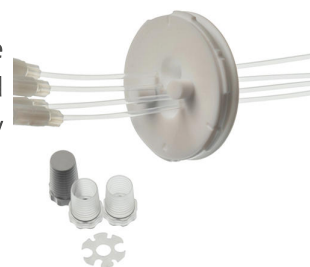
6.01403.030 Titration head 3xNS14 / 4x6.4 mm (P&P)

Titration head with 3 NS14 and 4x 6.4 mm openings for using 120 mL beakers in Pick&Place modules of the OMNIS Sample Robot Pick&Place with two retracted dosing tips. Prepared for being equipped with rinsing and aspiration tubing.



6.01403.040 Titration head 2xNS14 (P&P)

Titration head with 2 NS14 openings for use in Pick&Place modules of the OMNIS Sample Robot Pick&Place with 3 retracted dosing tips. Prepared for being equipped with rinsing nozzles. One aspiration tube is already retracted into the titration head.



6.01403.050 Titration head for KFT with reinforced tips (P&P)

Titration head for Karl Fischer titration in Pick&Place modules of the OMNIS Sample Robot Pick&Place. In addition to 2 reinforced antidiffusion tips, the titration head offers an opening for using an homogenizer (Polytron 1300D) or rod stirrer.



6.01403.060 Titration head 3xNS14 / 4x6.4 mm for 200 mL disposable beaker (P&P)

Titration head with 3 NS14 and 4x 6.4 mm openings for using 200 mL PP disposable beakers (6.1459.310) or 150 mL beaker glasses (high shape, without spout) in Pick&Place modules of the OMNIS Sample Robot Pick&Place with two retracted dosing tips. Prepared for being equipped with rinsing and aspiration tubing.



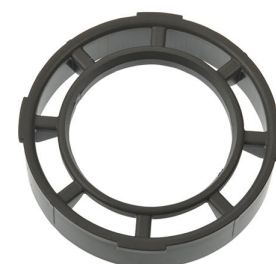
6.01404.020 Beaker adapter for 200 mL sample beaker

Beaker adapter for centering the 200 mL sample beaker in the slide of the Pick&Place modules.



6.01404.030 Beaker adapter for OMNIS 120 mL sample beaker

Beaker adapter for centering the 120 mL sample beaker in the slide of the Pick&Place modules



6.01404.040 Beaker adapter for OMNIS 75 mL sample beaker

Beaker adapter for centering the 75 mL sample beaker in the slide of the Pick&Place modules



6.01404.050 Beaker adapter for 150 mL sample beaker

Beaker adapter for centering the 150 mL sample beaker in the slide of the Pick&Place modules.



6.01462.010 Titration head adapter

This adapter enables the utilization of titration heads of the Sample Processor generation (814/815/855) on sample changers with screw-on titration heads.



6.02700.020 WSM connector plate

The connector plate connects 2 OMNIS Workstation Modules on a Sample Robot WSM M or L, thus lending it additional stability.



6.05700.010 Consumable Kit OMNIS Pump Module (2-channel)

Two pump tubings each and associated press clamps for replacement in the OMNIS pump module. One Consumable Kit can be used for re-equipping two peristaltic pumps of the pump module.



6.05800.540 Upgrade Pick&Place module WSM

This set contains all of the components required to extend an OMNIS Workstation Module (1T/0P) or (1T/2P) to include a second workstation. Sample throughput can be doubled as a result of the extension.



6.05800.560 Upgrade stirrer WSM

This set contains all of the components required to equip a workstation of an OMNIS Workstation Module with a magnetic stirrer.



6.05800.570 Upgrade peristaltic pump module WSM

This set contains all of the components that are required for the upgrade of an OMNIS Workstation Module involving the addition of 2 pumps. This set can be used not only to extend the number of pumps from 0 to 2, but also from 2 to 4, and enables the effective cleaning of sensors and sample vessels. In addition to the pumps required, all of the necessary tubing and canisters are included for equipping 1 rinsing pump and 1 aspiration pump each.

