



Main module Pick&Place S

2.1010.0010

Main module for setting up an OMNIS Sample Robot Pick&Place in size S. This module is comprised of module and rack plates. It is already equipped with the main lift and one gripper. In addition to sample racks and gripper fingers, workstations such as Pick&Place module or a pump module are required for using it to set up a functioning Sample Robot. The selection of these components proceeds in accordance with the application.

Below, the accessories are grouped into Scope of delivery and Optional accessories.
Please keep this printout at hand for ordering replacement material.
These lists may be subject to change.

Scope of delivery 2.1010.0010

Qt.	Order no.	Description
-----	-----------	-------------





Main module for setting up an OMNIS Sample Robot Pick&Place in size S. This module is equipped with the module and rack plate. It is already equipped with the main lift and one gripper. It must be equipped with sample racks, gripper fingers and workstations, e.g., Pick&Place module or a pump module in order to use it to set up a functioning Sample Robot. The selection of these components proceeds in accordance with the application.



The cable cover protects the MDL and Ethernet cables connectors on the OMNIS Sample Robot.



Optional accessories

Order no.	Description	
2.1014.0010	Pick&Place module	
	Module for installation in the module plate of the Pick&Place of the OMNIS Sample Robot. This workstation takes up the sample beaker for the analysis. Used sensors are cleaned or parked in the storage beaker of the Pick&Place module between analyses. If stirring is required during the analysis, then a separate rod stirrer must be used for this workstation.	
2.1014.0110	Pick&Place module with stirrer	
	Module for installation in the module plate of the Pick&Place of the OMNIS Sample Robot. This workstation takes up the sample beaker for the analysis. The built-in magnetic stirrer makes it possible to analyze samples that were prepared externally on a magnetic agitator directly in the Sample Robot without having to remove the magnetic stirring bar beforehand. Used sensors are cleaned or parked in the storage beaker of the Pick&Place module between analyses.	
2.1016.0010	Peristaltic (2-channel) pump module	
	Module for installation in the module plate of the Pick&Place of the OMNIS Sample Robot. This workstation is equipped with both a rinsing pump and an aspiration pump. They are used to clean the sensors in a Pick&Place module and to empty the sample beaker after the analysis before it is returned to the rack once again.	
2.1016.0110	Peristaltic (4-channel) pump module	
	Module for installation in the module plate of the Pick&Place of the OMNIS Sample Robot. This workstation is equipped with two rinsing pumps and two aspiration pumps each. They are used to clean the sensors in two Pick&Place modules and to empty the sample beaker after the analysis before it is placed back in the rack once again.	

6.02041.010 OMNIS sample rack, 9 x 250 mL, (PP)

OMNIS sample rack for OMNIS Sample Robot Pick&Place, suitable for 9 sample beakers. The following sample beakers can be used: 6.01400.000, 6.01400.003, 6.01400.100.

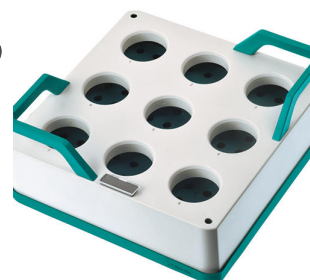
Plastic: Polypropylene (PP)



6.02041.020 OMNIS sample rack, 9 x 200 mL, (PP)

OMNIS sample rack for OMNIS Sample Robot Pick&Place, suitable for 9 sample beakers. The following sample beakers can be used: 6.1459.310.

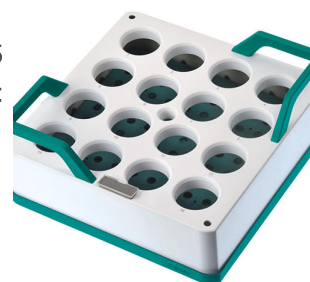
Plastic: Polypropylene (PP)



6.02041.030 OMNIS sample rack, 16 x 120 mL, (PP)

OMNIS sample rack for OMNIS Sample Robot Pick&Place, suitable for 16 sample beakers. The following sample beakers can be used: 6.01400.200, 6.01400.300, 6.01400.303.

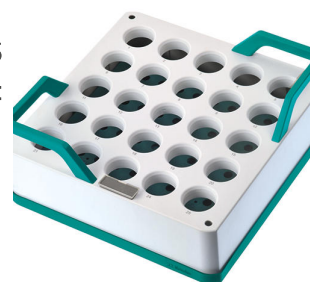
Plastic: Polypropylene (PP)



6.02041.040 OMNIS sample rack, 25 x 75 mL, (PP)

OMNIS sample rack for OMNIS Sample Robot Pick&Place, suitable for 25 sample beakers. The following sample beakers can be used: 6.01402.000, 6.01402.003, 6.1459.400.

Plastic: Polypropylene (PP)



6.02041.050 OMNIS sample rack, 9 x 150 mL, (PP)

OMNIS sample rack for OMNIS Sample Robot Pick&Place, suitable for 9 sample beakers. The following sample beakers can be used: 150 mL beaker (tall shape and without spout).

Plastic: Polypropylene (PP)



6.02064.020 Retainer for 200 mL sample beaker

Retainer for fixing the 200 mL sample beaker in place in the gripper fingers of the OMNIS Sample Robot Pick&Place.



6.02601.010 Gripper fingers 43 - 65 mm

Gripper fingers for OMNIS Sample Robot Pick&Place for gripping sample beakers with an outer diameter of 43 to 65 mm.



6.02601.020 Gripper fingers 50 - 72 mm

Gripper fingers for OMNIS Sample Robot Pick&Place for gripping sample beakers with an outer diameter of 50 to 72 mm.



6.02601.030 Gripper fingers 48-64 mm

Gripper fingers for OMNIS Pick&Place Sample Robot for gripping sample beakers with an outer diameter of 48 - 64 mm.



6.02601.040 Gripper fingers 28-48 mm

Gripper fingers for OMNIS Sample Robot Pick&Place for gripping sample beakers with an outer diameter of 28 - 48 mm.



6.05700.000 Consumable Kit OMNIS Gripper

Four slide sleeves and rubber gripper fingers each for replacement on the gripper finger of the OMNIS Sample Robot.



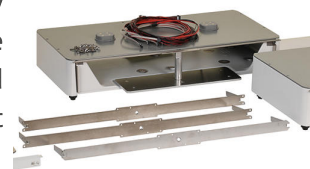
6.05700.250 Consumable Kit OMNIS Gripper for 6.02601.030

Four rubber gripper fingers for replacement on the gripper finger of the OMNIS Sample Robot.



6.05800.000 Upgrade Sample Robot S to M

The set contains all of the components required for upgrading an already existing OMNIS Sample Robot from size S to size M. In addition to the required rack and module bases, all of the required cables, screws and arm extensions are included, as is the function license. As before, the set also contains a drain channel for OMNIS Sample Robot M/L.



6.05800.010 Upgrade Sample Robot S to L

The set contains all of the components required for the upgrade of an already existing OMNIS Sample Robot from size S to size L. In addition to the required rack and module bases, all of the required cables, screws and arm extensions are included, as is the function license. As before, the set also contains a drain channel for OMNIS Sample Robot M/L.

