



IC-Ausrüstung: Inline-Verdünnung

6.5330.120

Zubehörset zur Inline-Verdünnung. Zur Verwendung mit dem 858 Professional Sample Processor, 800 Dosino and 741 Magnetic Stirrer.

Lieferumfang 6.5330.120

Qt.	Order no.	Beschreibung
1 PCS	6.01808.010	Y tubing connector, PP, 3 x 7-8 mm
		Connector for waste tubing



1 PCS

6.1562.130

Transfer Tubing with holder 2 x M6 / 10 mL to
Sample Processors

Transfer tubing for dilution and preconcentration using a Dosino and
Sample Processor.



1 PCS

6.1580.210

807 Dosing Unit 10 mL without accessories

807 Dosing Unit with integrated data chip with 10 mL glass cylinder and
light protection, mountable to a reagent bottle with ISO/DIN GL 45 glass
thread.



1 PCS

6.1602.160

Bottle attachment GL 45 for eluents and reagents

For eluent, reagent, and rinsing bottles, with connectors for the adsorber
tube and the aspiration tubing.



1 PCS

6.1608.070

Eluent bottle / 2 L / GL 45



1 PCS

6.1618.020

Thread adapter S 40 to GL 45

Adapter for bottles with S40 thread (Merck...) to GL45.



1 PCS

6.1619.000

Adsorber tube for 807 Dosing Unit



1 PCS

6.1624.000

Adapter SGJ 14 for 6.1619.XXX Adsorber tube

Adapter SGJ 14. Part of 6.1619.010 for Dilution Sample Processor.



1 PCS

6.1803.070

PTFE capillary 0.97 mm i.d. / 40 cm

Capillary for filtration, for IC Filtration Sample Processor, IC Liquid Handling Filtration Unit



2 PCS

6.1803.080

PTFE capillary 0.97 mm i.d. / 1 m

Capillary for filtration, for IC Filtration Sample Processor, IC Liquid Handling Filtration Unit



1 PCS

6.1805.120

FEP tubing / M6 / 100 cm

With light and kink protection



1 PCS

6.1816.070

Silicone tubing 8/12 mm, 1 m

For the IC Sample Center



1 PCS

6.1819.110

FEP aspiration tubing to canister

Aspiration tubing to canister attachment with M6 connector. For the production of eluents.



1 PCS

6.1826.380

Pump tubing LFL (gray/gray), 3 stoppers

For Inline Dilution



1 PCS

6.1903.000

Stirring bar / 8 x 3 mm

Stirring bar with magnetic core, PTFE covering, 8 mm long with 3 mm diameter.

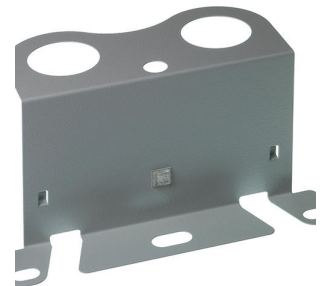


1 PCS

6.2057.210

Holder for Dosino to IC instruments

Mounting part for Dosinos at the IC instrument housing.



1 PCS

6.2744.010

Pressure screw 5x

With UNF 10/32 connection. For the connection of PEEK capillaries



1 PCS

6.2744.034

Coupling olive/UNF 10/32, 2x

Connection between pressure screw and pump tubing. 2 pieces. For IC instruments with peristaltic pump.

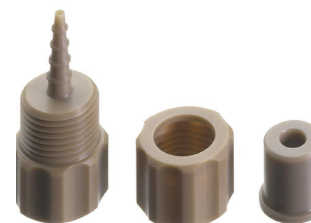


1 PCS

6.2744.160

Nozzle/UNF 10/32 coupling with security device

Security device for connecting pump tubing to a nozzle.



1 PCS

6.2744.200

Adapter UNF 10/32 outer / M6 inner

Connecting 1/16 in. PEEK capillaries and transfer tubing (M6)



1 PCS

6.2841.120

Liquid Handling Station, left

Combined rinsing and dilution station for sample changers with a Swing Head. To be assembled to the left of the tower.

