



# IC-Ausrüstung: Inline-Dialyse

6.5330.100

Zubehörset zur Inline-Dialyse. Zur Verwendung mit dem 858 Professional Sample Processor und einer zusätzlichen 2-Kanal-Peristaltikpumpe.

Lieferumfang 6.5330.100

| Qt.   | Order no.  | Beschreibung                              |
|-------|------------|---|
| 1 PCS | 6.1602.150 | Bottle attachment / GL 45 - 3 x UNF 10/32 |

For the connection of 1/16 in. capillaries. Used in conjunction with MSM auxiliary solutions and in Metrohm Inline Sample Preparation.



1 PCS

6.1608.070

Eluent bottle / 2 L / GL 45



---

8 PCS

6.1803.040

PTFE capillary 0.5 mm i.d. / 1 m

Capillary for sample handling in IC.



---

2 PCS

6.1826.320

Pump tubing LFL (orange/yellow) , 3-stopper

For suppressor solutions and for acceptor solutions for inline dialysis and for inline ultrafiltration.



---

2 PCS

6.1826.340

Pump tubing LFL (black/black), 3 stoppers

For the sample solution in inline dialysis.



1 PCS

6.1831.050

PEEK capillary 0.5 mm i.d., 40 cm

For inline dialysis and for sample changers. For IC Dialysis Unit, IC Sample Processor, Compact IC Autosampler, IC Dialysis Sample Processor, IC Liquid Handling Dialysis Unit, Compact VA Autosampler



---

1 PCS

6.1831.160

PEEK capillary, 0.5 mm ID / 70 cm



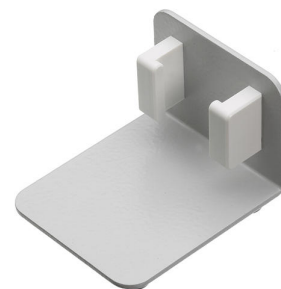
---

1 PCS

6.2057.130

Dialysis cell holder

Holder for the dialysis cell



---

1 PCS

6.2621.070

5 mm hex key for IC Sample Processors



1 PCS

6.2714.010

Dialysis membrane (cellulose acetate)

Nominal pore size : 0.2  $\mu\text{m}$ . Set of 50 pieces. For inline dialysis



1 PCS

6.2729.100

Dialysis cell

With 4 x 6.2744.060 Blind stoppers. For inline dialysis



1 PCS

6.2744.000

Pressure screw PVDF

With UNF 10/32 connection. For IC instruments, inline dialysis (connection of PTFE capillaries)



2 PCS

6.2744.034

Coupling olive/UNF 10/32, 2x

Connection between pressure screw and pump tubing. 2 pieces. For IC instruments with peristaltic pump.



2 PCS

6.2744.070

Pressure screw short

Short version. With UNF 10/32 connection. 5 pieces. For the connection of PEEK capillaries

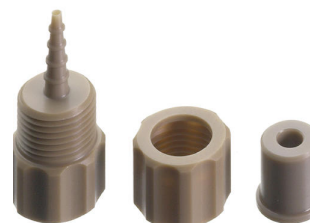


4 PCS

6.2744.160

Nozzle/UNF 10/32 coupling with security device

Security device for connecting pump tubing to a nozzle.



1 PCS

6.2755.000

Tubing cartridge

For the peristaltic pumps of IC instruments. Contact pressure adjustable.



1 PCS


6.2831.010

Plastic tweezers

For dialysis and filtration membranes



# Optionales Zubehör

| Order no.  | Beschreibung  |
|------------|---|
| 6.2714.030 | Dialysis membrane (polyamide)   |
|            | For inline dialysis and filtration  |
|            |  |

---