



# Upgrade OMNIS Sample Robot S-L WSM

6.05800.610

Dieses Set beinhaltet alle Komponenten für das Upgrade eines bereits bestehenden OMNIS Sample Robot WSM der Grösse S zur Grösse L. Zusätzlich zu den benötigten Rack- und Modulunterbauten, sind alle benötigten Kabel, Schrauben, Armverlängerungen sowie die Funktionslizenz enthalten. Weiterhin enthält das Set eine Ablaufrinne für den OMNIS Sample Robot M/L.




## Lieferumfang 6.05800.610

Qt.	Order no.	Beschreibung
1 PCS	6.01804.460	Drain channel for OMNIS Sample Robot M/L WSM

The drain channel is mounted behind the workstations of the OMNIS Sample Robot WSM M/L and, in case of an error, collects any overflowing solution in order to channel it safely and contact-free through tubing into a waste canister.



## Optionales Zubehör

Order no.	Beschreibung	
2.1024.0010	OMNIS Workstation Module (1T/0P)	
	Module for installation in the OMNIS Sample Robot WSM. This module contains a workstation for the automatic processing of sample vessels without pumps. The workstation takes up the sample beaker for the analysis. Used sensors can be cleaned or parked in the storage beaker of the workstation between analyses. If stirring is required during the analysis, then a separate rod stirrer or a magnetic stirrer can be attached for this workstation.	
2.1024.0020	OMNIS Workstation Module (1T/2P)	
	Module for installation in the OMNIS Sample Robot WSM. This module contains a workstation for the automatic processing of sample vessels and two pumps for the automatic cleaning (rinsing and extraction) of sample vessels and sensors. The workstation takes up the sample beaker for the analysis. Used sensors can be cleaned or parked in the storage beaker of the workstation between analyses. If stirring is required during the analysis, then a separate rod stirrer or a magnetic stirrer can be installed for this workstation.	
2.1024.0030	OMNIS Workstation Module (2T/4P)	
	Module for installation in the OMNIS Sample Robot WSM. This module contains 2 workstations for the automatic processing of sample vessels and 4 pumps for the automatic cleaning of sample vessels and sensors (rinsing and extraction) at both workstations. The workstations take up the sample beaker for the analysis. Used sensors can be cleaned or parked in the storage beakers of the workstations between analyses. If stirring is required during the analysis, then a separate rod stirrer or a magnetic stirrer can be installed for each workstation.	

6.02041.010 OMNIS sample rack, 9 x 250 mL, (PP)

OMNIS sample rack for OMNIS Sample Robot Pick&Place, suitable for 9 sample beakers. The following sample beakers can be used: 6.01400.000, 6.01400.003, 6.01400.100.

Plastic: Polypropylene (PP)

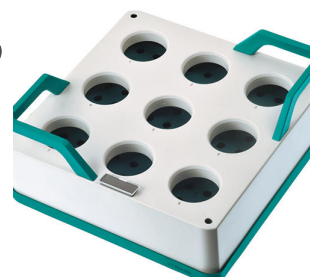


---

6.02041.020 OMNIS sample rack, 9 x 200 mL, (PP)

OMNIS sample rack for OMNIS Sample Robot Pick&Place, suitable for 9 sample beakers. The following sample beakers can be used: 6.1459.310.

Plastic: Polypropylene (PP)

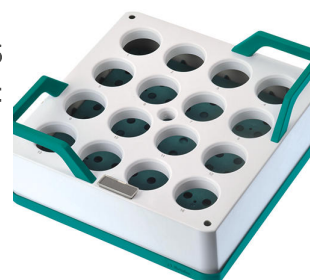


---

6.02041.030 OMNIS sample rack, 16 x 120 mL, (PP)

OMNIS sample rack for OMNIS Sample Robot Pick&Place, suitable for 16 sample beakers. The following sample beakers can be used: 6.01400.200, 6.01400.300, 6.01400.303.

Plastic: Polypropylene (PP)

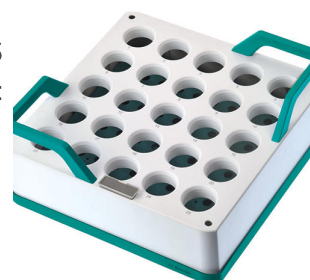


---

6.02041.040 OMNIS sample rack, 25 x 75 mL, (PP)

OMNIS sample rack for OMNIS Sample Robot Pick&Place, suitable for 25 sample beakers. The following sample beakers can be used: 6.01402.000, 6.01402.003, 6.1459.400.

Plastic: Polypropylene (PP)



6.02041.050

OMNIS sample rack, 9 x 150 mL, (PP)

OMNIS sample rack for OMNIS Sample Robot Pick&Place, suitable for 9 sample beakers. The following sample beakers can be used: 150 mL beaker (tall shape and without spout).

Plastic: Polypropylene (PP)

