



Robotic Titrosampler «Light» (1T/2P)

2.855.0040

Einstiegsmodell des Robotic Titrosamplers für mittleres Probenaufkommen. Der platz sparende Robotic Sample Processor XL mit integriertem Titrando, einer Arbeitsstation und zwei eingebauten Membranpumpen wird durch die Wahl von Probenrack und Elektrode zur applikationsspezifischen Automation in der Titration ausgebaut. Die Programmierung der Methoden erfolgt mittels handlichem Touch Control, der Titrationssoftware tiamo™ oder OMNIS.

Bei wachsendem Probenaufkommen kann der Robotic Titrosampler «Light» einfach und günstig zum «Basic» ausgebaut werden, mit dem ein Vielfaches der ursprünglichen Probenmenge bewältigt werden kann.

Lieferumfang 2.855.0040

Qt.	Order no.	Beschreibung
-----	-----------	--------------

1 PCS

1.855.0040

Robotic Titrosampler "Light" (1T/2P)

Entry-level model of the Robotic Titrosampler for medium sample throughput. The space-saving Robotic Sample Processor XL with integrated Titrando, one workstation and two built-in membrane pumps is expanded to become application-specific automation in titration through the selection of sample rack and electrode. The programming of the methods is accomplished by means of the handy Touch Control or with the ti amo™ titration software.



With increasing sample throughputs, the Robotic Titrosampler "Light" can be expanded simply and inexpensively to become the "Basic" model with which many times the original sample quantity can be managed.

2 PCS

6.1236.020

Sleeve with SGJ 14/12 mm

Sleeve with SGJ 14/12 mm and O-ring.



1 PCS

6.1543.170

Aspiration tip / M8 thread

Aspiration tip for the Sample Processors.



2 PCS

6.1621.000

Container 10 L

As rinsing or waste container in automated systems.



1 PCS

6.1805.200

PTFE tubing / M8 / 0.5 m



3 PCS

6.1805.420

FEP tubing / M6 / 48 cm

With light and kink protection



2 PCS

6.1812.000

PTFE tubing 4 mm / 6 mm / 4 m



2 PCS

6.1828.000

PVDF connection nipple

For 6.1621.000 canister.



1 PCS

6.2053.000

Cable clip

Cable clip for fastening cables and tubes



1 PCS

6.2151.000

Cable USB A – mini-DIN 8-pin

Controller cable



1 PCS

6.2621.030

Hexagon key 4 mm



1 PCS

6.2621.070

5 mm hex key for IC Sample Processors



1 PCS

6.2621.130

Hexagon key 2 mm

2 mm.



1 PCS

6.2621.140

Hexagon key 2.5 mm



3 PCS

6.2740.020

Spray nozzle

For the fine-spraying of the rinsing solution.

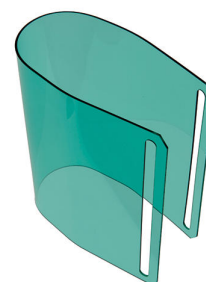


1 PCS

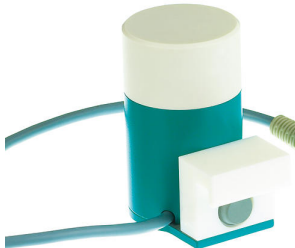


6.2751.190

Safety shield for 855 Robotic Titrosampler "Light"

Safety shield for 855 Robotic Titrosampler "Light"



Optionales Zubehör

Order no.	Beschreibung	
2.741.0010	741 Magnetic Stirrer	
	Magnetic stirrer for sample changers.	
	The magnetic stirrer is located beneath the sample rack.	
2.802.0020	802 Stirrer for sample changer	
	Rod stirrer for sample changer and Sample Processor.	
	With 104 mm 6.1909.020 stirring propeller and permanently installed cable.	
2.849.0010	849 Level Control	
	Additional equipment for Sample Processors for monitoring the filling level of rinsing or waste canisters via Remote. Prevents pumps from running dry and/or canisters from overflowing and is suitable for use with aqueous solutions, solvents and suspensions.	

License-based PC program for controlling complex OMNIS analysis systems.

- Sample-oriented operating procedures with numerous templates
- Graphical method editor with numerous templates
- Clearly organized and professional sample lists
- Management of instruments, work systems, sensors, solutions
- Dialog languages: German, English, Chinese



Enables stand-alone operation of the OMNIS software on a Windows™ computer.

Features:

- The license already includes one OMNIS instrument license.
- Must be activated via the Metrohm licensing portal.
- Not transferable to another computer.



With 6xSGJ 14 and 3x SGJ 9 openings.



6.1458.020 Titration head /4 x M10 connectors

With 4 M10 screw nipples, including stoppers.



6.1458.030 KF titration head /4 x M10 connectors

With 4 M10 screw nipples, including stoppers.



6.1458.040 Titration Head, 3 x SGJ 14

Titration head for 120 mL beakers. With 3 openings SGJ 14 and 4 openings 6.4 mm, 2 dosing tips included. Suitable for rinsing and aspiration equipment.



6.1458.070 Titration head / 2 x SGJ 14

Titration head for 75 mL beakers. With 2 openings SGJ 14, 2 openings 6.4 mm, and 3 pre-mounted dosing tips. Suitable for rinsing and aspiration equipment.



6.1909.010 Stirring propeller / 87 mm

Propeller stirrer, length from lower edge of SGJ: 96 mm. For use with beakers with 722, 802 Rod Stirrer



6.1909.020 Stirring propeller / 95 mm

Propeller stirrer, length from lower edge of SGJ: 104 mm. For use with beakers with 722, 802 Rod Stirrer



6.1909.030 Stirring propeller / 95 mm

Propeller stirrer with PP shaft, PVDF tip. Length from the SGJ: 104 mm. For KF applications with 722, 802 Rod Stirrer



6.1909.040 Stirring propeller / 93 mm

Propeller stirrer, length from lower edge of SGJ: 102 mm. For titration vessels with SGJ 14/15 and 722, 802 Rod Stirrer



6.1909.050

Stirring propeller / 102 mm

Propeller for 802 Stirrer when this is used with sample racks for 120 mL beakers (6.1459.300)



6.2041.310

Sample rack, 12 x 250 mL, (PVC)

Sample rack for 810 Sample Processor, 814 USB Sample Processor, 855 Robotic Titrosampler "Light", suitable for 12 sample beakers. The following sample beakers can be used: 6.1432.320, 6.1432.323, 6.1453.220, 6.1453.250.

Plastic: Polyvinyl chloride (PVC)



6.2041.320

Sample rack, 16 x 150 mL, (PVC)

Sample rack for 810 Sample Processor, 814 USB Sample Processor, 855 Robotic Titrosampler "Light", suitable for 16 sample beakers. The following sample beakers can be used: 150 mL beaker (tall).

Plastic: Polyvinyl chloride (PVC)



6.2041.340

Sample rack, 24 x 75 mL, (PVC)

Sample rack for 810 Sample Processor, 814 USB Sample Processor, 855 Robotic Titrosampler "Light", suitable for 24 sample beakers. The following sample beakers can be used: 6.1432.210, 6.1459.400.

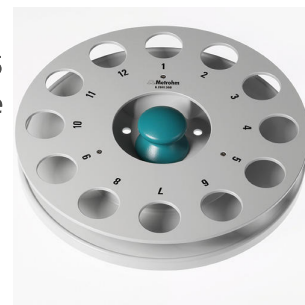
Plastic: Polyvinyl chloride (PVC)



6.2041.360 Sample rack, 12 x 150 mL (PVC)

Sample rack for 810 Sample Processor, 814 USB Sample Processor, 855 Robotic Titrosampler "Light", suitable for 12 sample beakers. The following sample beakers can be used: 150 mL beaker (tall), 6.1459.310.

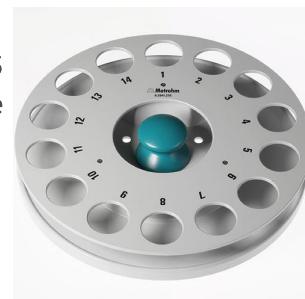
Plastic: Polyvinyl chloride (PVC)



6.2041.370 Sample rack, 14 x 200 mL, (PVC)

Sample rack for 810 Sample Processor, 814 USB Sample Processor, 855 Robotic Titrosampler "Light", suitable for 14 sample beakers. The following sample beakers can be used: 6.1459.310.

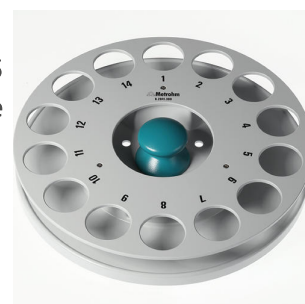
Plastic: Polyvinyl chloride (PVC)



6.2041.380 Sample rack, 14 x 235 mL (PVC)

Sample rack for 810 Sample Changer, 814 USB Sample Processor, 855 Robotic Titrosampler "Light", suitable for 14 sample beakers. The following sample beakers can be used: 235 mL (8 oz).

Plastic: Polyvinyl chloride (PVC)



6.2041.390 Sample rack, 16 x 100 mL, (PVC)

Sample rack for 810 Sample Changer, 814 USB Sample Processor, 855 Robotic Titrosampler "Light", suitable for 16 sample beakers. The following sample beakers can be used: 100 mL beakers, short.

Plastic: Polyvinyl chloride (PVC)



6.2041.460 Sample rack, 21 x 100 mL, (PVC)

Sample rack for 810 Sample Processor, 814 USB Sample Processor, 855 Robotic Titrosampler "Light" suitable for 21 sample vessels. The following sample vessels can be used: 100 mL digestion tubes (CSB).

Plastic: Polyvinyl chloride (PVC)



6.2041.470 Sample rack, 22 x 120 mL, (PP)

Sample rack for 810 Sample Changer, 814 USB Sample Processor, 855 Robotic Titrosampler "Light", suitable for 22 sample beakers. The following sample beakers can be used: 6.1459.300, 6.1459.307.

Plastic: Polypropylene (PP)



6.2058.110 Tower extension for Sample Processors

Height extension 130 mm for Sample Processors. Tower extension for COD applications.



6.2103.130 Adapter red 2 mm plug / 4 mm socket

For connecting plug B (4 mm) to 2 mm socket.



6.2103.140 Adapter black 2 mm plug / B socket 4 mm
For connecting plug B (4 mm) to 2 mm socket.



6.2711.060 Drip pan for 778/810/814/838/858 Sample Processors
Drip pan for 778, 810, 814, 838, 858 Sample Processors



6.2711.070 Drip pan for 789/815/855
Drip pan for 789, 815, 855 Robotic Sample Processors XL

