



# 2060 TI Ex Proof Process Analyzer

An explosion-proof process  
analyzer for hazardous  
environments

**PUSHING  
THE  
LIMITS  
TOGETHER**

 **Metrohm**  
Process Analytics

# 2060 TI Ex Proof Process Analyzer

The modular and flexible **2060 TI Ex Proof Process Analyzer** is designed to meet the protection requirements of hazardous environments. It combines a purge and pressurization system with intrinsically safe electronic devices in order to provide a versatile explosion protection method. The air purging phase and permanent overpressure prevent potentially explosive atmospheres from entering the analyzer enclosure.

In hazardous environments where flammable gases, vapors, or dust are present, instruments must operate safely and avoid triggering explosions. The **2060 TI Ex Proof Process Analyzer** complies with EU Directives 94/9/EC (ATEX95) and is certified for Zone 1 and Zone 2 areas.

Because of its smart design, the **2060 TI Ex Proof Process Analyzer** eradicates the need to purge analyzer shelters they might be installed in. This reduces utility costs and eliminates the need for hot work permits during routine maintenance. This ATEX-certified process analyzer can be installed at the production line in any hazardous environment, without a need for costly infrastructure.



Specialty sample valve.

The **2060 TI Ex Proof Process Analyzer** meets EU Directives 94/9/EC (ATEX95). Metrohm Process Analytics can, upon request, evaluate compliance with other directives to ensure acceptance in all global markets.

## The 2060 TI Ex Proof Process Analyzer will help you to:

- Deliver near real-time data that can be used to improve process performance and productivity, enhancing Industry 4.0 initiatives.
- Harmonize the technology and methodology used in the laboratory and process by conforming to multiple requirements at once.
- Eliminate the need for process personnel to collect samples, improving plant and operator safety.

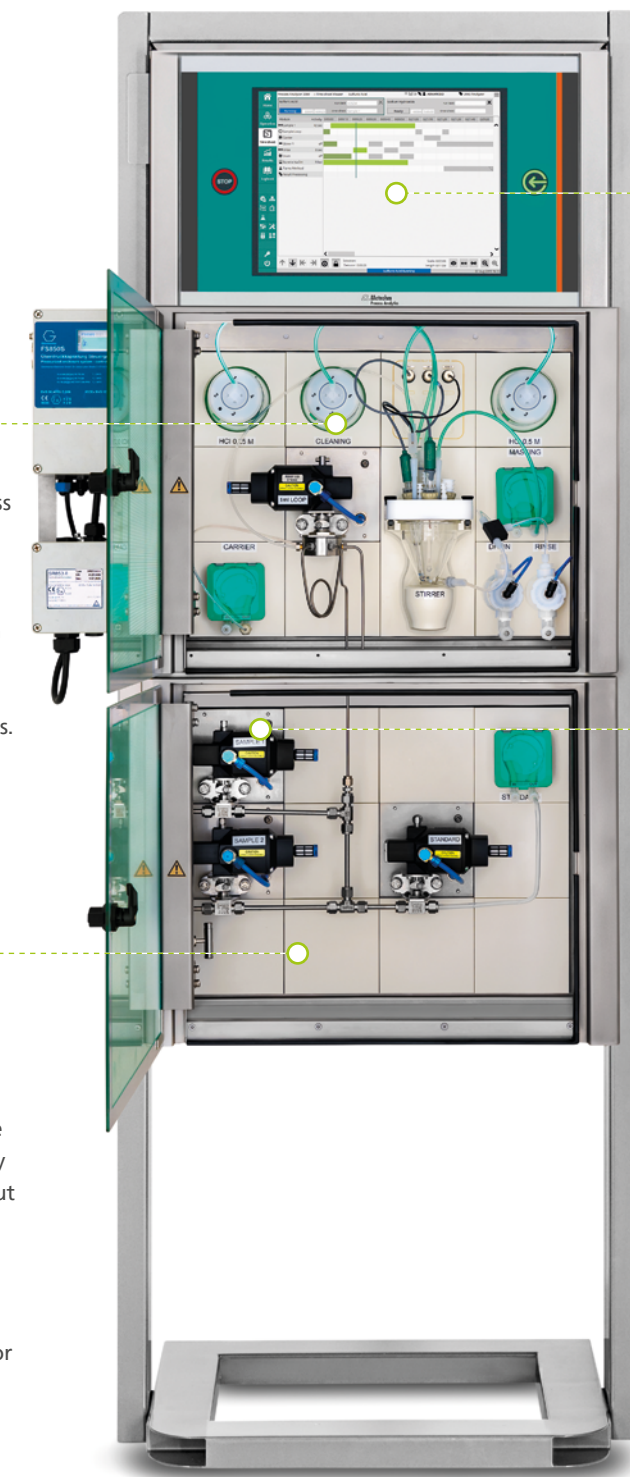
## Efficient and durable sample handling.

The **2060 TI Ex Proof Process Analyzer** uses heavy-duty pneumatic sample valves to manage samples of different temperatures and viscosities. This configuration reduces the time it takes to collect samples. Metrohm sample panels and shelters can be integrated into the process to enhance preconditioning and protect the analyzer in harsh environments.

## FEATURES AND BENEFITS

**Multiple analysis techniques.**  
A single **2060 TI Ex Proof Process Analyzer** can simultaneously perform analyses to monitor several parameters in multiple sample streams. The system can be configured with up to two wet parts to handle the most demanding process applications.

**Robust design: industrial IP66 rating.**  
A dual-compartment enclosure ensures complete separation between the electronics and the wet part. Maintenance and daily checks can be performed without interacting with the electronics, which ensures continuous functioning and plant safety. The analyzer is splash-proof and watertight, making it suitable for harsh industrial conditions.



**New, configurable software.**  
The software of the **2060 TI Ex Proof Process Analyzer** features a modern, user-friendly layout based on time programming sheets. It reduces analysis time, supports full-system diagnostics, and allows fine-tuning of methods to adapt to process changes. Users can set limit conditions and alarms to control the analyzer.

**Virtually unlimited sampling options.**  
Custom preconditioning systems can be designed for challenging samples, including those with high temperature, high pressure, or solids content. Custom shelters are also available to protect the analyzer in harsh environments.

Fully configured



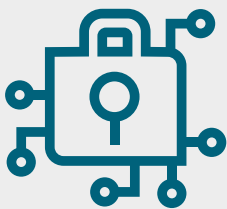


## «REAL-TIME» DATA

Knowledge is key, and the **IMPACT software** is ideal for superior process monitoring. Process data are collected and displayed in «real-time» on the human interface. Operators can have an overview of the analysis at any moment, so they can be up to date at all times.

## TAILORED PROGRAMS

With **IMPACT software**, advanced programs can be tailor-made to perfectly match each application. As each program is independent, **IMPACT** can be programmed to monitor multiple measuring points simultaneously or to control a sample conditioning system (SCS).



## DATA INTEGRITY

Your data are safe with us. The **IMPACT software** has been designed to store results in an encrypted database. To prevent tampering, all collected data is fully traceable. The power buffer and controlled shutdown sequence prevent data corruption. The embedded operating system blocks user access, providing an additional layer of protection.

## MULTILEVEL ACCESS

Different access levels can be configured to make every user feel at ease with the **IMPACT software**. Advanced users are able to have deeper access and change/edit parameters.



## CUSTOMIZABLE OPERATION SCREENS

The **IMPACT software** can be configured to show multiple operation screens at once. These screens can be defined to control programs (start, stop, loop, cycles, status...) and to display results in different formats (charts, histograms, tables, etc.). Each user can have their own operation screen based on their personal requirements.

## ALARMS AND DIAGNOSTICS

Not only does the **IMPACT software** provide results from analyses, it also performs health checks on the whole system and proactively informs operators of potential issues. The software triggers alarms when hardware faults are detected, or when data is trending out of range.



The intelligent and proprietary **IMPACT software** (Intelligent Metrohm Process Analytics Control Technology) is used across the 2060 platform. **IMPACT** is a complete solution that offers a wide range of possibilities for process monitoring and automation.

**IMPACT** facilitates the acquisition of analytical data from Metrohm process analyzers. It displays and transfers results to any Distributed Control System or Programmable Logic Controller (DCS, PLC), seamlessly connects to external systems (e.g., sensors), and smoothly executes advanced programs.





# Experience you can trust – solutions for all major industries

In environments with flammable gases, vapors, or dust, measuring instruments must operate safely without causing ignition. Explosion-proof Process Analyzers are designed to meet certified electrical area classifications. For these applications, Metrohm Process Analytics developed the 2060 TI Ex Proof Process Analyzer for wet chemistry measurements.

## TYPICAL APPLICATIONS FOR THE 2060 TI EX PROOF PROCESS ANALYZER ARE:

- Water (moisture) in: acetic acid, alcohol, glycol, HC condensate, and kerosene
- NaOH in fuel, ethyleneglycol and MPD/MTP; chemical and petrochemical
- NaCl in Crude Oil
- Chloride, iron and pH in CDU distillate steam
- Ammonia and H<sub>2</sub>S in Sour Water Stripper
- Cyanide in waste and industrial water
- Bromide in PTA and hydrogenated C5/C8
- H<sub>2</sub>O<sub>2</sub> in HPPO and dispensed/recovery liquid
- Other examples; KOH, HF, pTBC, TAN, H<sub>2</sub>SO<sub>4</sub>, Mercaptanes





