

IC Application Note No. S-230

Title: Phosphate and sulfate in polymer samples after inline dilution plus inline dialysis

Summary: Determination of phosphate and sulfate in a liquid polymer sample applying anion chromatography with conductivity detection after chemical suppression.

Sample: Liquid polymer (diluted 1 : 10)

Sample Preparation: Metrohm Inline Sample Preparation (MISP): inline dilution 1 : 10 and subsequent inline dialysis with the 838 Advanced Sample Processor

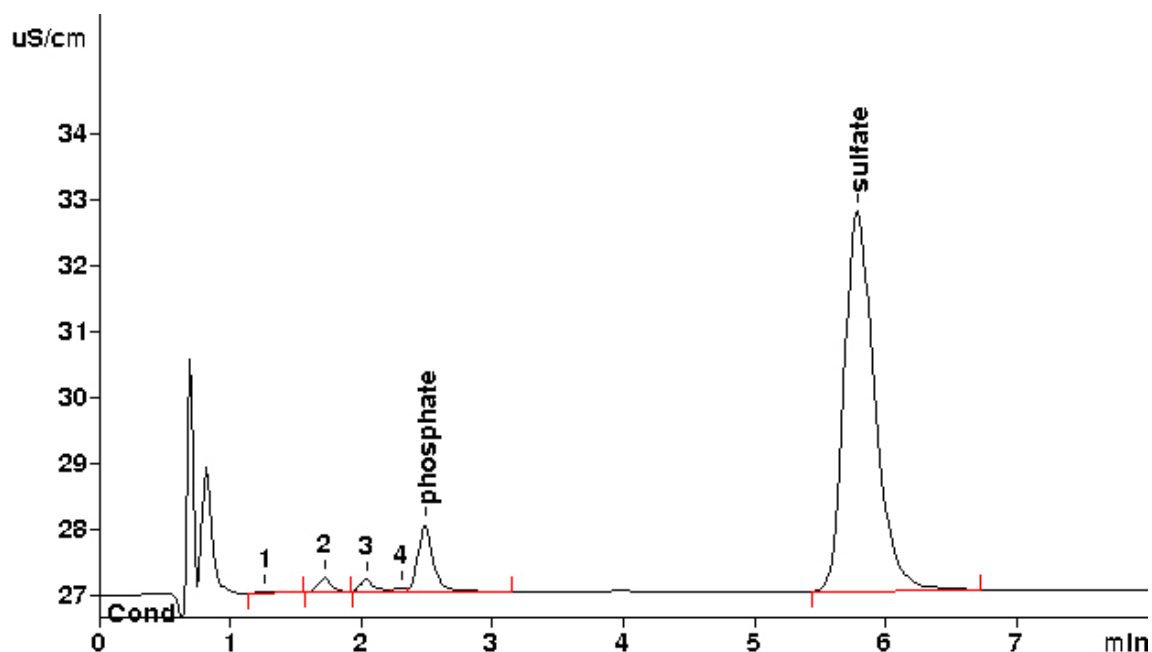
Column: 6.1020.050 Metrosep A Supp 10 – 50

Eluent: 8.0 mmol/L sodium carbonate
6.0 mmol/L sodium hydrogencarbonate

Suppressor: Metrohm Suppressor Module (MSM, 50 mmol/L sulfuric acid)

Flow: 1.0 mL/min

Injection Volume: 20 µL



Results:	Phosphate ppm	Sulfate ppm
	469.7	2583